

**FACTS ABOUT THE
CITY OF NORTH AUGUSTA
STORMWATER MANAGEMENT
INSPECTION PROGRAM:**

All residential, subdivision, and commercial construction projects require a satisfactory sediment and erosion control inspection at the start of each project and prior to any additional building inspections being conducted.

A **satisfactory** inspection indicates the site is in compliance. An **unsatisfactory** inspection results in a report and contact with the project manager by telephone or in person. The site must return to compliance prior to any further building inspections. A **marginal rating** will be issued to alert contractors that they need to correct small issues and a follow-up inspection will be conducted.

Subsequent inspections will follow the same process. Continued non-compliance or offsite impacts will result in placement of a stop-work order. Stop work orders require all issues be resolved prior to any further work on the structure and **no additional building inspections will be conducted** until the site returns to compliance. City inspectors will be alerted to the placement of Stormwater Department stop-work orders on projects.

Corrective actions may include repair or replacement of BMPs, additional erosion or sediment control measures, street sweeping, and/or removal of sediment from the storm drainage system; permit modification; or other.

At this time, the Stormwater Management Department will not require steel posts and wire for initial silt fence installation. If however the silt fence fails due to overtopping, collapse, or due to being driven over, the contractor will be required to replace existing silt fence with a wire and steel post backed silt fence.

Further reference available:

City of North Augusta - Sediment & Erosion Control Manual at www.northaugusta.net. Click on Departments, select Engineering then Stormwater.

**FOR QUESTIONS OR TO REQUEST AN
INSPECTION CONTACT:**

Taylor Ferguson, CEPSCI
Engineering Technician
Office (803) 441-4233 - Cell (803) 474-2922
Email: tferguson@northaugusta.net

CITY OF NORTH AUGUSTA



City of North Augusta
Stormwater Management Department
Tanya Strickland
Stormwater Manager
P. O. Box 6400
North Augusta, SC 29861

Office: (803) 441-4246
Cell: (803) 474-2910
Fax: (803) 441-4208

2016

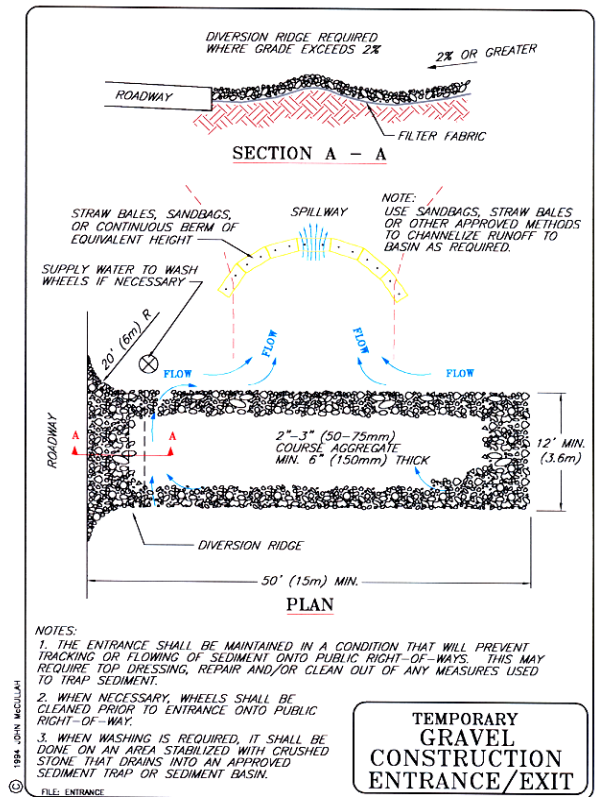
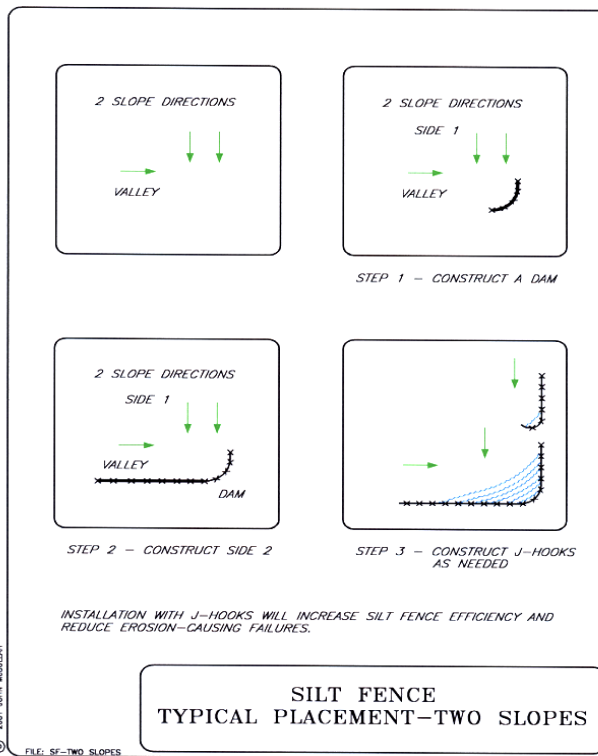
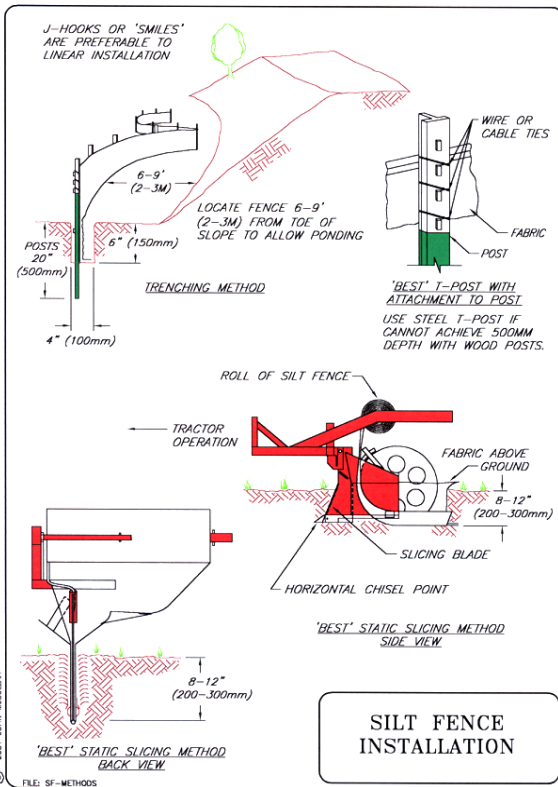
CITY OF NORTH AUGUSTA

**SEDIMENT AND
EROSION
CONTROL
RESIDENTIAL LOT
BMP GUIDE**

Your construction site **must pass an initial
Sediment & Erosion Control inspection,
before **all** other building inspections. All
permits must be in hand prior to beginning
land disturbance.**



UNSATISFACTORY

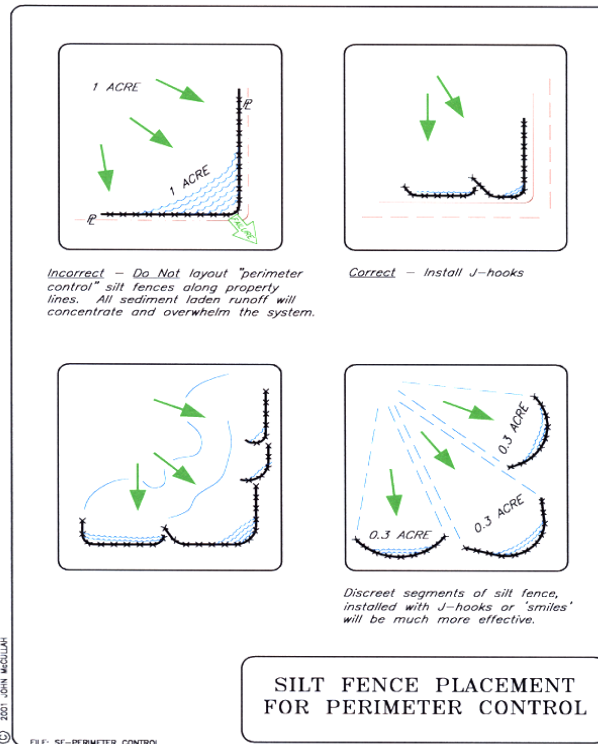


SPECIFICATIONS

- Fabric minimum 90lb tensile strength and at least 0.60mm opening size and 36 inch width.
- Silt fence should be trenched or sliced.
- If trenched, the trench must be at least 6" deep and fill must be compacted.
- Posts must be at least 1.5" in diameter and no more than 6' apart.
- Silt fence must be at least 6' from slope toe to increase ponding volume.
- Use "J" hooks to reduce drainage area.
- When using 2 rows of silt fence, place them at least 6-9' apart and apply temporary seed and mulch between the 2 rows.
- When using silt fence for catch basin protection, use diagonal bracing (2x4s between tops of steel posts).

MAINTENANCE

- Sediment shall be removed when it reaches 1/3 of the fence height.
- Inspect silt fence every 7 days and after each rain.
- If the fence fails for any reason, the Stormwater Management Department will require replacement with steel posts and wire backing.



SPECIFICATIONS

- Construction exits for residential lots should follow the dimensions of 12' wide by 30' long by 6" deep. Larger projects and subdivisions require a 12' wide by 50' long by 6" deep construction exit. All projects must use geotextile fabric under stone layer. Stone size must be #4 aggregate.
- A diversion ridge should be used to prevent water from running into the street.
- Silt fence should turn into the slope adjacent to and on both sides of the construction exit.

MAINTENANCE

- Fresh stone should be added when clogged with sediment.
- Repair washouts immediately and divert concentrated flows to prevent displacement of stone.