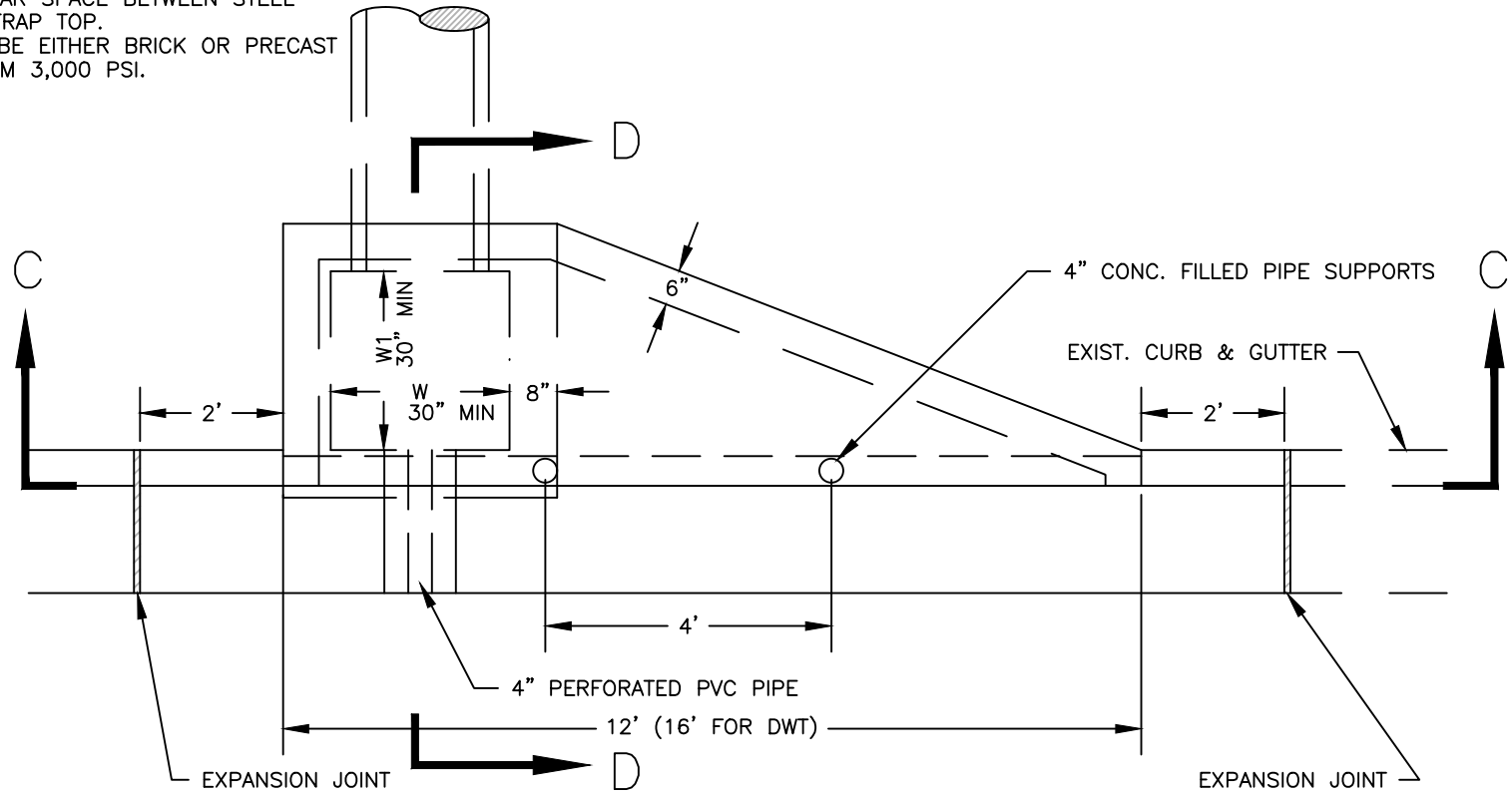


NOTES:

1. ALL CONCRETE TO BE 3,000 PSI.
2. IF DEPTH EXCEEDS 4', INSTALL STEPS.
3. BOX DIMENSIONS MAY INCREASE TO ACCOMMODATE PIPE SIZES LARGER THAN 18". SEE CHART ON DETAIL 6.05.
4. MAINTAIN 1 1/2" CLEAR SPACE BETWEEN STEEL AND BOTTOM OF TRAP TOP.
5. WING TRAPS CAN BE EITHER BRICK OR PRECAST CONCRETE, MINIMUM 3,000 PSI.



NOT TO SCALE

FOR SECTION C-C: SEE DETAIL 6.03
 FOR SECTION D-D: SEE DETAIL 6.04



REVISIONS		
DATE	BY	DESCRIPTION
2/16/23	BGM	CHANGE FONT, TITLE BLOCK

SINGLE WING TRAP

DWG. NO.
 6.01