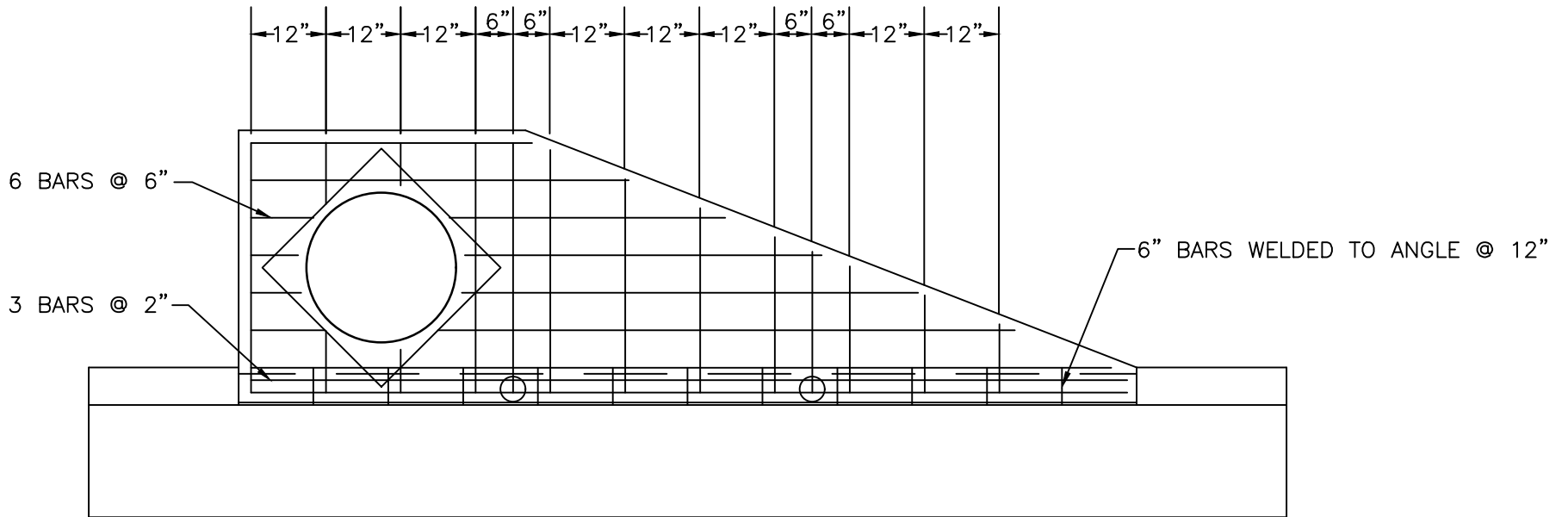


NOTES:

1. ALL CONCRETE TO BE 3,000 PSI.
2. IF DEPTH EXCEEDS 4', INSTALL STEPS.
3. BOX DIMENSIONS MAY INCREASE TO ACCOMODATE PIPE SIZES LARGER THAN 18". SEE CHART ON DETAIL 6.05.
4. ALL REBAR TO BE #5.
5. MAINTAIN 1 1/2" CLEAR SPACE BETWEEN STEEL AND BOTTOM OF TRAP TOP.



NOT TO SCALE



**North
Augusta**
South Carolina's
Riverfront

REVISIONS

DATE	BY	DESCRIPTION
2/16/23	BGM	CHANGE FONT, TITLE BLOCK

REBAR SCHEDULE

DWG. NO.

6.02