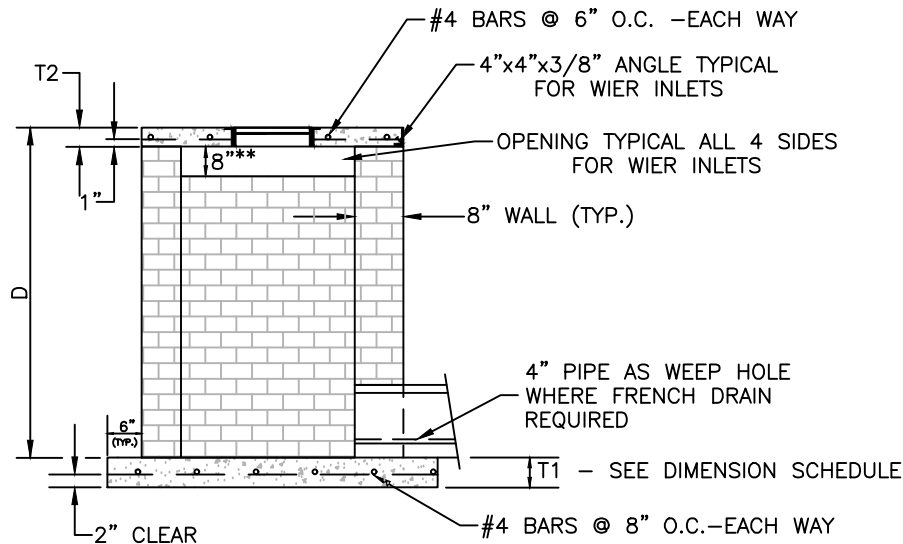


PLAN  
N.T.S.



ELEVATION  
N.T.S.

\*\* THIS MAY BE INCREASED AS REQUIRED BY THE ENGINEER

NOTES:

1. USE 4" X 4" X 3/8" ANGLE IRON WITH 3/8" X 3" NELSON STUDS AT 18" O.C. ON OUTSIDE BOTTOM EDGES OF SUSPENDED SLABS. FOR SPANS EXCEEDING 4', PROVIDE A 4" CONCRETE FILLED PVC PIPE SUPPORT WITH 6" X 6" X 1/4" TOP AND BOTTOM PLATES AT CENTER OF ALL SPANS.
2. INSTALL #3 BARS @ 8" O.C. IN WEIR OPENINGS AND TACK WELD TO ANGLE IRON TO PROVIDE FOR SAFETY WHEN "H" EXCEEDS 8".
3. FOR JUNCTION BOXES, BRICK UP INLETS AND SET TOP FLUSH WITH GROUND.
4. BOX CAN BE EITHER BRICK OR PRECAST. IF BOX IS PRECAST, MINIMUM 3,000 PSI FOR ALL CONCRETE.

DIMENSION SCHEDULE FOR WIER INLETS				
PIPE SIZE	W	MIN. "D"	"T1"	"T2"
18"	4'-0"	4'-0"	6"	4"
24"	4'-0"	4'-6"	6"	4"
30"	5'-0"	5'-0"	8"	6"
36"	5'-6"	6'-0"	8"	6"
42"	6'-0"	6'-6"	8"	8"
48"	7'-0"	7'-0"	8"	8"
54"	8'-0"	7'-6"	8"	8"

DIMENSIONS FOR JUNCTION BOXES				
PIPE SIZE	W	MIN. "D"	"T1"	"T2"
UP TO 24"	4'-0"	4'-0"	6"	4"
30"	4'-6"	4'-6"	8"	6"
36"	5'-0"	5'-0"	8"	6"
42"	6'-0"	5'-6"	8"	8"
48"	6'-6"	6'-0"	8"	8"
54"	7'-0"	6'-6"	8"	8"

\* USE REINFORCING STEEL AT TOP AND BOTTOM OF SLAB



REVISIONS

DATE	BY	DESCRIPTION
2/16/23	BGM	CHANGE FONT, TITLE BLOCK

WIER INLET &  
JUNCTION BOX

DWG. NO.

6.06