

RESOLUTION NO. 2024-48  
APPROVING THE GREENEWAY LANDSCAPE ENHANCEMENT HARDSCAPE  
PROJECT

WHEREAS, the City of North Augusta is committed to enhancing public spaces, including the Greenway, to ensure its sustainability, aesthetics, and accessibility for all residents and visitors; and

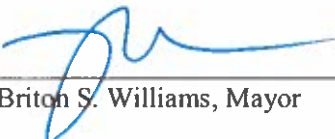
WHEREAS, the Greenway Landscape Enhancement Hardscape Project, as outlined in Addendum A, has been identified as a priority to improve key segments of the Greenway; and

WHEREAS, sealed bids were solicited in accordance with the City of North Augusta procurement code, and Rock Creek Irrigation & Landscapes submitted the lowest responsive and responsible bid in the amount of \$99,632.40.

NOW, THEREFORE, BE IT RESOLVED, by the Mayor and City Council of the City of North Augusta, South Carolina, in a meeting duly assembled and by the authority thereof, that:

1. The Greenway Landscape Enhancement Hardscape Project is hereby approved.
2. The bid from Rock Creek Irrigation & Landscapes in the amount of \$99,632.40 is accepted, and the City Administrator or his designee is authorized to execute all necessary contracts and agreements for the project.
3. A 10% contingency is approved for the project, bringing the total authorization to \$109,595.64.
4. The funding sources for this project will be drawn in order from the following accounts, with the amount from each fund to be decided and authorized by the City Administrator:
  - o Capital Projects Sales Tax III - Landscaping for Riverfront/Towne Center/Downtown Areas, not to exceed the account balance of \$28,748.66 plus any additional interest accrued.
  - o Local Fiscal Recovery Funds (SLFRF) Expenditure Request 7 – Greenway Improvements, not to exceed \$23,060.06.
  - o Riverfront Central Core Redevelopment Fund - Greenway Repair, not to exceed \$50,000.
  - o Local Fiscal Recovery Funds (SLFRF) Expenditure Request 12 – Downtown Improvements, not to exceed \$7,786.92.

DONE, RATIFIED AND ADOPTED BY THE MAYOR AND CITY COUNCIL OF THE CITY OF NORTH AUGUSTA, SOUTH CAROLINA, ON THIS 21<sup>st</sup> DAY OF OCTOBER, 2024.

  
\_\_\_\_\_  
Briton S. Williams, Mayor

ATTEST:  
  
\_\_\_\_\_  
Jamie Paul, City Clerk

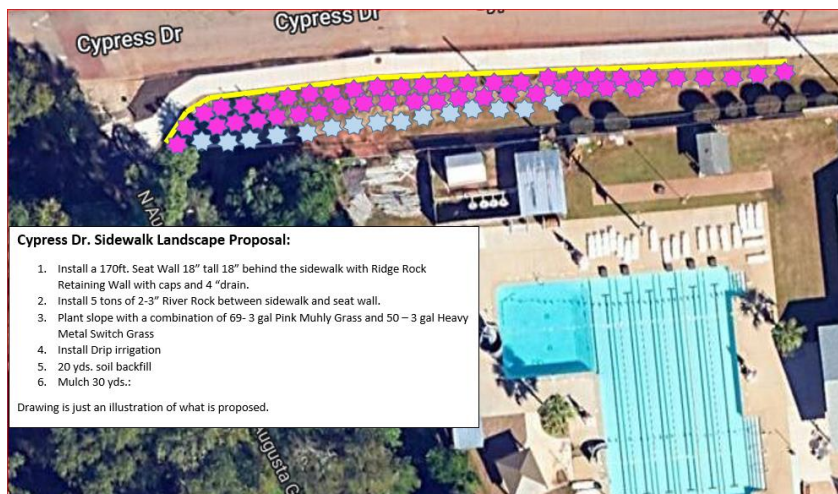
# ADDENDUM A

## Greenway Landscape Enhancement Hardscape Project Specifications & Locations

### 1. Hammond Hills Greenway Extension Hardscape Enhancements

(see map below)

- a. Build an 18" seat wall behind the sidewalk w/ a 4" drain, seat wall shall have a 12"- 18" off set from the back of sidewalk.
  - 1) AT&T Fiber is in the vicinity and may be encountered, call for locates.
- b. Install 5 tons of 2"- 4 "river rock w/ non-woven geotextile fabric between the sidewalk and the face of the seat wall.
- c. Place soil to backfill seat wall.
- d. Install plantings for slope: 69 Muhly Grass, & 50 Heavy Metal Switch Grass
- e. Install drip irrigation for plantings, utilizing Netafim Techline HCVXR17mm Check Valve Dripline 0.77 gph. 12in. spacing. Include a Hunter NODE100 NODE-100 Battery Controller with Solenoid
- f. Install 30 yds. of Dyed Brown Hardwood Mulch



### 2. Boat Launch (by Water Treatment Facility) & Greenway @ Center St Hardscape Improvements. (See Map Locations below)

- a. Install 1400 sq. ft. of a -woven 4oz geotextile fabric and 48 tons of Rip Rap stone (4"-12"). Area is a 12ft. x 116ft.
- b. Install 30 tons of 2" - 4" Tennessee River Rock w/ a 4oz. non-woven geotextile fabric between the Greenway and the stream.

# ADDENDUM A

Map a: Boat Launch on Hammond's Ferry Road



Map b: Greenway @ Center St. Hardscape Area



### 3. Bluff Ave. Hardscape Enhancements

- a. Greenway Connector along the Black Chain Link Fence: Install 50 Tons of 2" – 4" Tennessee River Rock w/ 4 oz. non-woven Geotextile Fabric between the Greenway and the stream.

# ADDENDUM A



- b. Bed at Stop Sign & Trash Receptacle: Install 11 tons of 2" – 4" Tennessee River Rock w/ 4 oz. non-woven Geotextile Fabric, also install (5) 24-36" Tennessee Boulders in the middle of the beds (outlined in red), 3 boulders in the stop sign bed and 2 boulders in the trash receptacle bed.



- c. Install 1626 sq. ft. of English Edge Full Range 2 ¼ x 4 x 8 Pavers, in a Running Bond Pattern, using a 4" compacted crushed stone base and a 1" sand bed for pavers. Paver joints shall be filled with a Polymeric Sand (Buff Color). Location on Bluff Ave: from Stop sign at Bluff & Center St. to 408 Bluff Ave. between the curb and sidewalk.

# ADDENDUM A

## Photos of Paver Locations:

