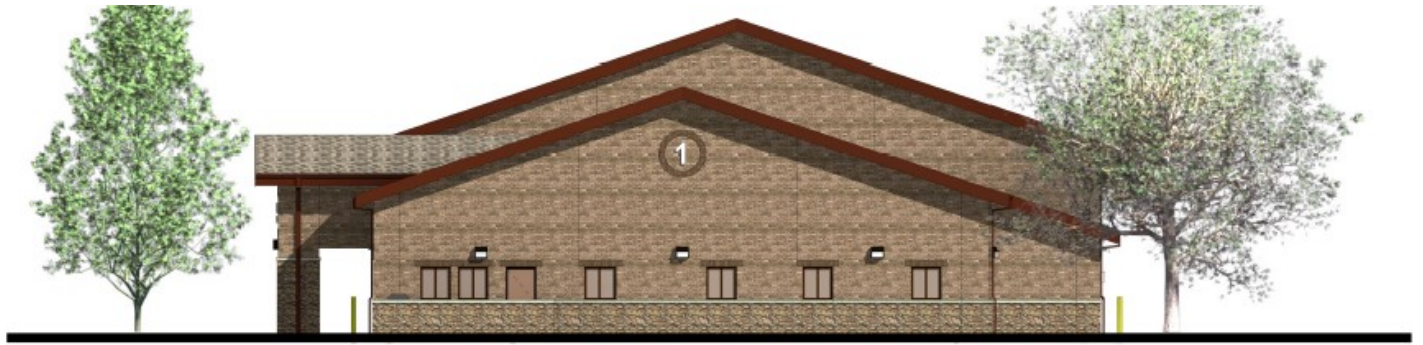


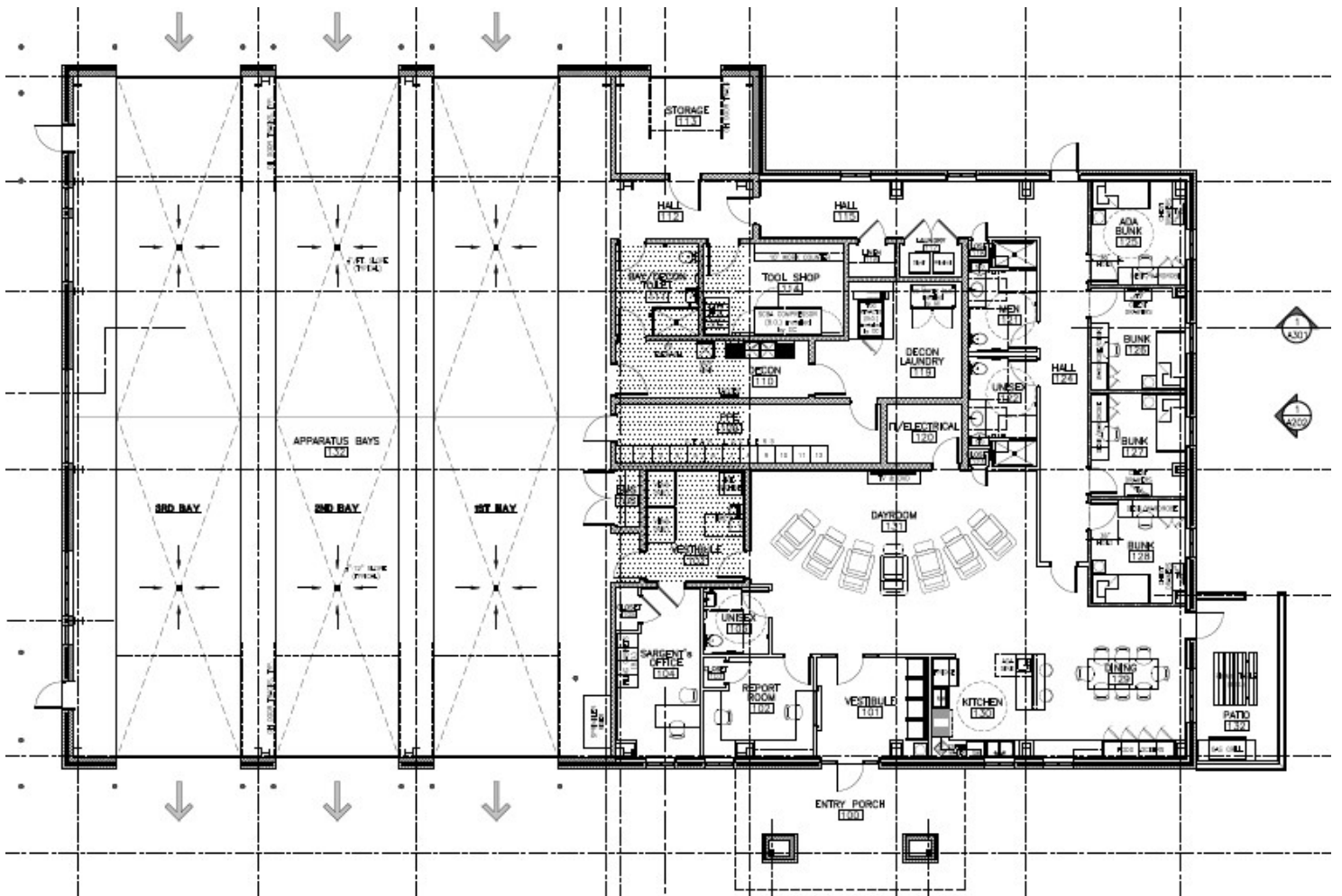
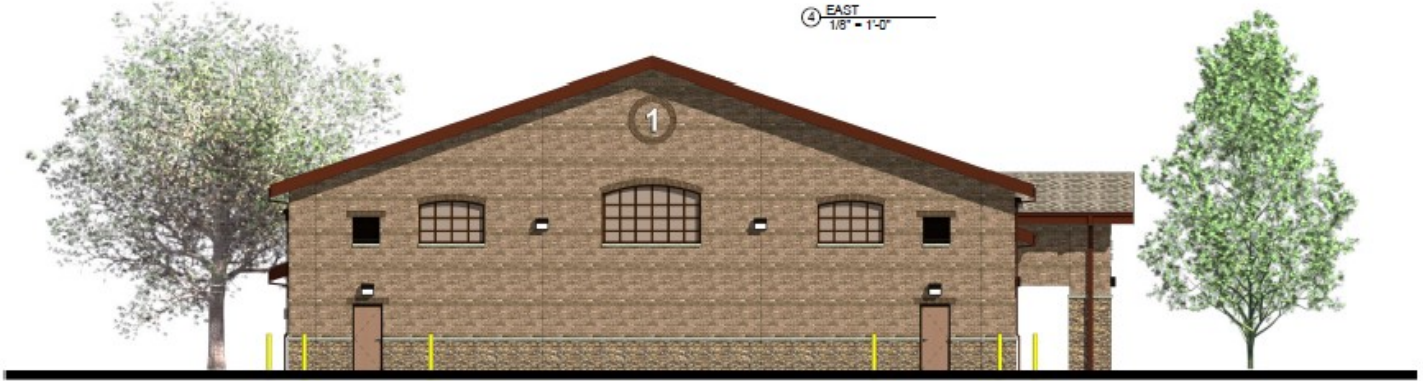
City of North Augusta
New Public Safety Fire Station #1
Progress Update
August 2020

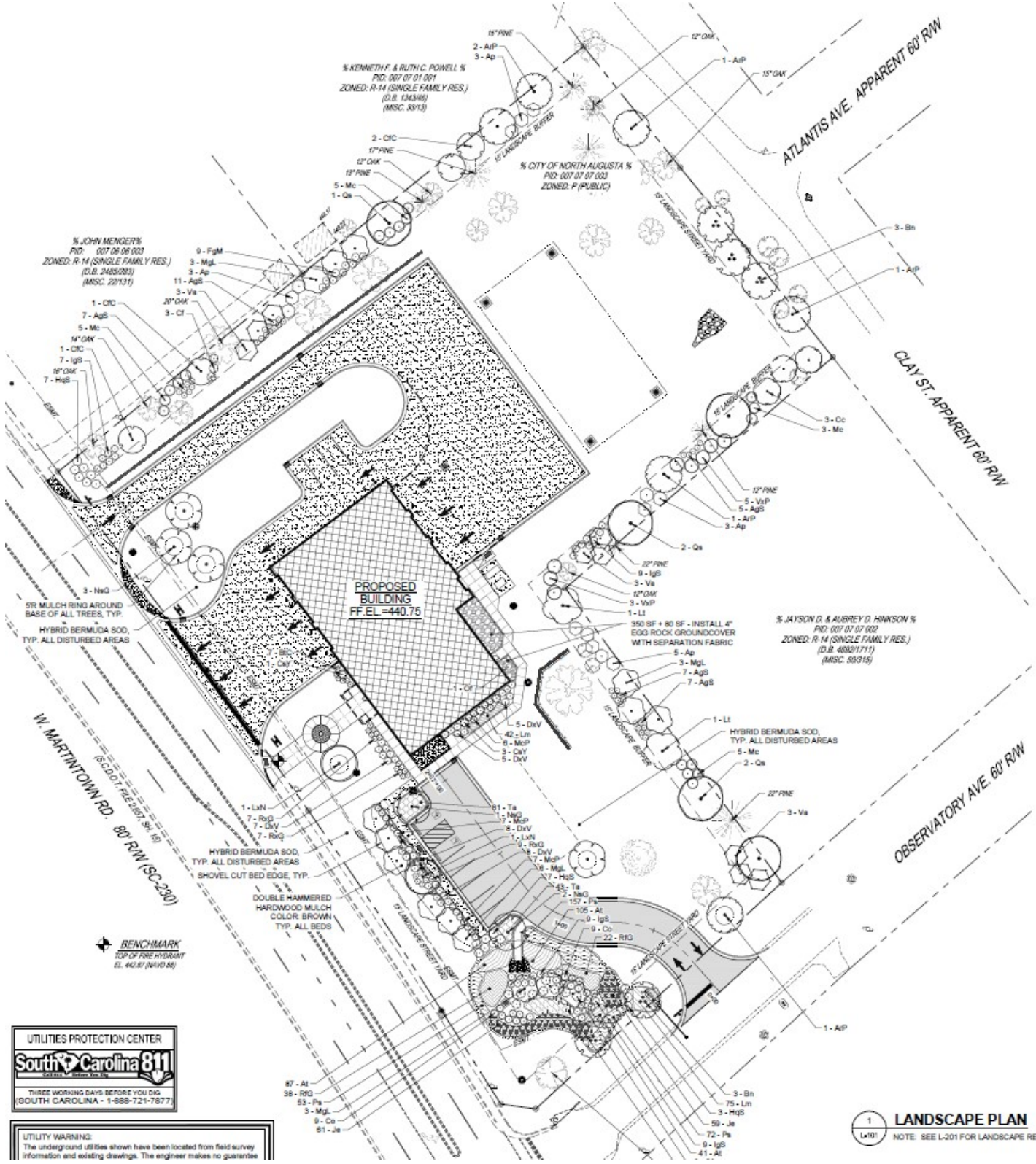


- **Design Status** – The Design work is underway. The Programming Phase, Conceptual Schematic and Design Development Phases are complete. Regular project meetings are being held to provide NAPS feedback to Designers. Construction Drawing phase is ongoing.
- **Permitting and Bidding** - This will follow Design Completion.
- **Construction Status** - This will follow Permitting, Bidding and Contract Award.
- **Furniture, Fixtures and Equipment (FF&E) Status** – All of these items have been budgeted and the next stage of planning will start once the Construction Phase is underway.
- **IT/Communications** – This Fire Station will be set up just like Station #3 with IT and communication technology built into the station.
- **Project Budget** – The Project budget is \$3.8M.
- **Schedule** – Preliminary timeframe for project completion is Early Summer 2022 (Difficult to determine schedule risks from COVID-19, these may push the project into the Late Fall 2022).
- **Renderings and Site Plan** – Included with this update.



④ EAST
1/8" = 1'-0"





% KENNETH F. & RUTH C. POWELL %
 PID: 007 07 01 001
 ZONED: R-14 (SINGLE FAMILY RES.)
 (D.B. 134396)
 (MSC. 5313)

% JOHN MENDER %
 PID: 007 06 08 003
 ZONED: R-14 (SINGLE FAMILY RES.)
 (D.B. 2485203)
 (MSC. 22131)

% CITY OF NORTH AUGUSTA %
 PID: 007 07 07 003
 ZONED: P (PUBLIC)

ATLANTIS AVE. APPARENT 60' RW
 CLAY ST. APPARENT 60' RW

PROPOSED BUILDING
 FF EL = 440.75

% JAYSON D. & AUBREY D. HANSON %
 PID: 007 07 07 002
 ZONED: R-14 (SINGLE FAMILY RES.)
 (D.B. 40821711)
 (MSC. 50315)

W. MARTINTOWN RD. 80' RW (SC-200)
 (S.C.D.O.T. RE-107 56' 10")

OBSERVATORY AVE. 60' RW

BENCHMARK
 TOP OF FIRE HYDRANT
 EL. 401.87 (NAD 83)

UTILITIES PROTECTION CENTER
South Carolina 811
 1-888-721-7877
 THREE WORKING DAYS BEFORE YOU DIG
 SOUTH CAROLINA

UTILITY WARNING:
 The underground utilities shown have been located from field survey information and existing drawings. The engineer makes no guarantee

LANDSCAPE PLAN
 NOTE: SEE L-201 FOR LANDSCAPE REQUIREMENTS