

Preserving and Maintaining Healthy Trees

Tree Protection Zone

- a fenced area around a tree that will not be disturbed
- the soil is protected from compaction
- critical roots are not damaged
- trunk and branches are not damaged by equipment
- tree receives adequate supplies of soil nutrients, air, and water

Proper Soil & Mulching

- good soil for tree growth is a mixture of clay, sand, and silt called a "loam."
- is watered correctly based on tree species
- contains 1 to 5 percent decayed leaves,
- has a covering of leaves and other organic material
- good soils contain a population of living organisms such as fungi, bacteria, and earthworms
- place 2-4 inches of mulch out to the drip line of the tree
- Root flare must be above ground and visible

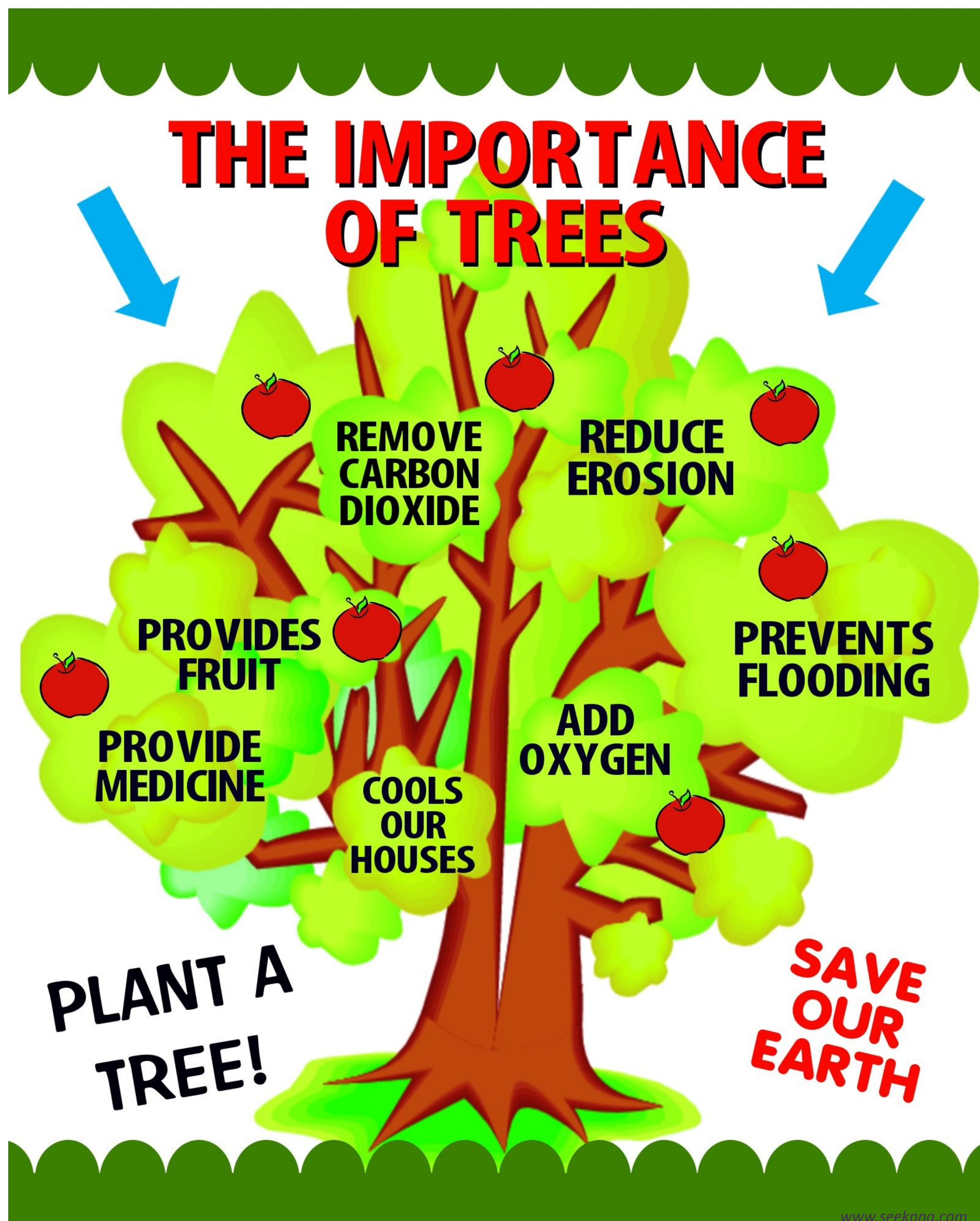
Planting a Tree Correctly Requires

- Proper time of year
- Proper species location
- Proper distance from structures
- Proper depth and width of hole
- And proper placement in ground and watering

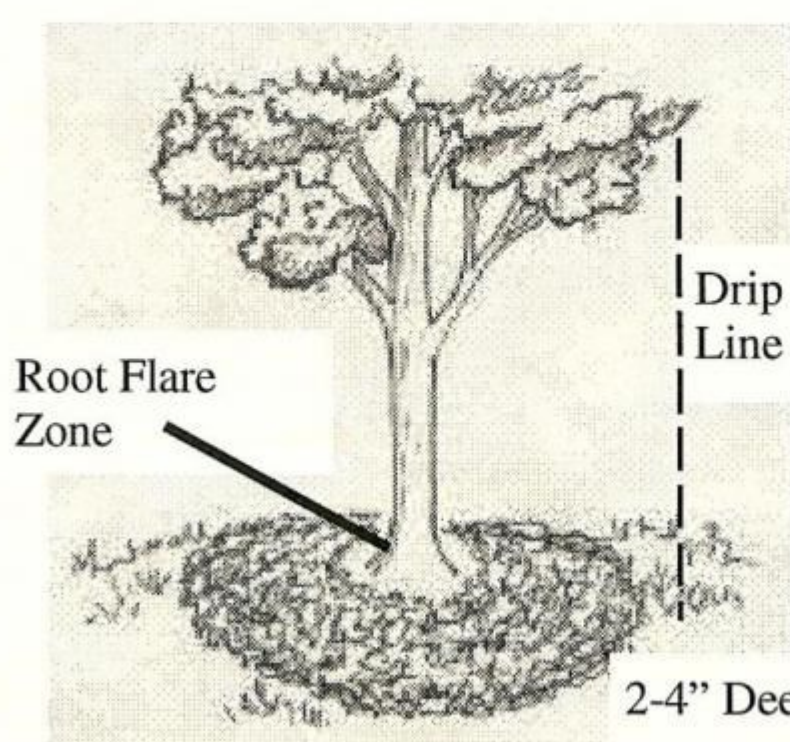
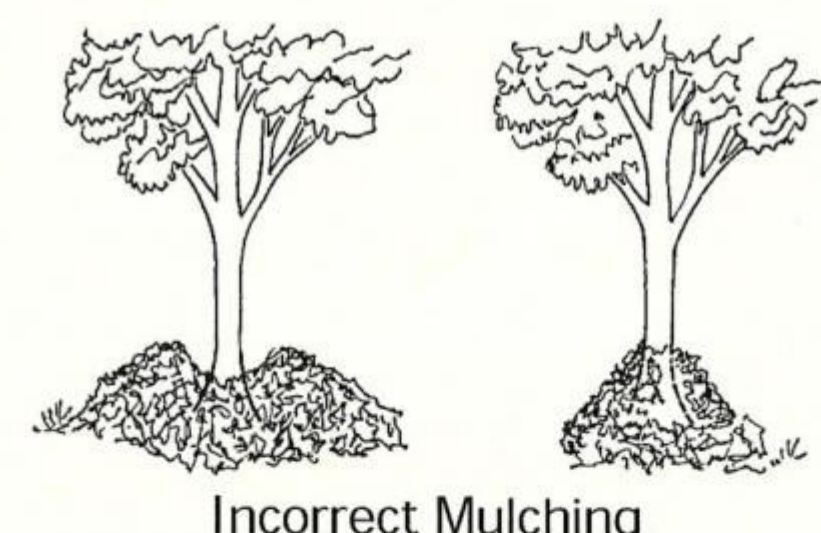


Don't dig a \$10 hole for a \$100 tree!
Hole should be 2 ½ times the size of the root ball or larger.

Root flare always level with surface, not below!



Mulch at ground level



Proper Mulching Method

Good Mulching



Bad Mulching



Learn more about proper selection, planting and maintaining your trees at:

<http://www.treesc.org/> or
<https://www.arboday.org/>