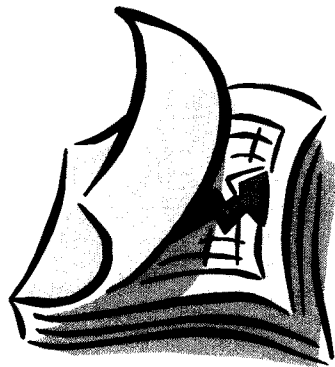


# CITY OF NORTH AUGUSTA



## MONTHLY DEPARTMENTAL REPORTS



FOR THE MONTH OF JULY, 2014

# NORTH AUGUSTA FINANCE DEPARTMENT



JOHN P. POTTER, JR., DIRECTOR

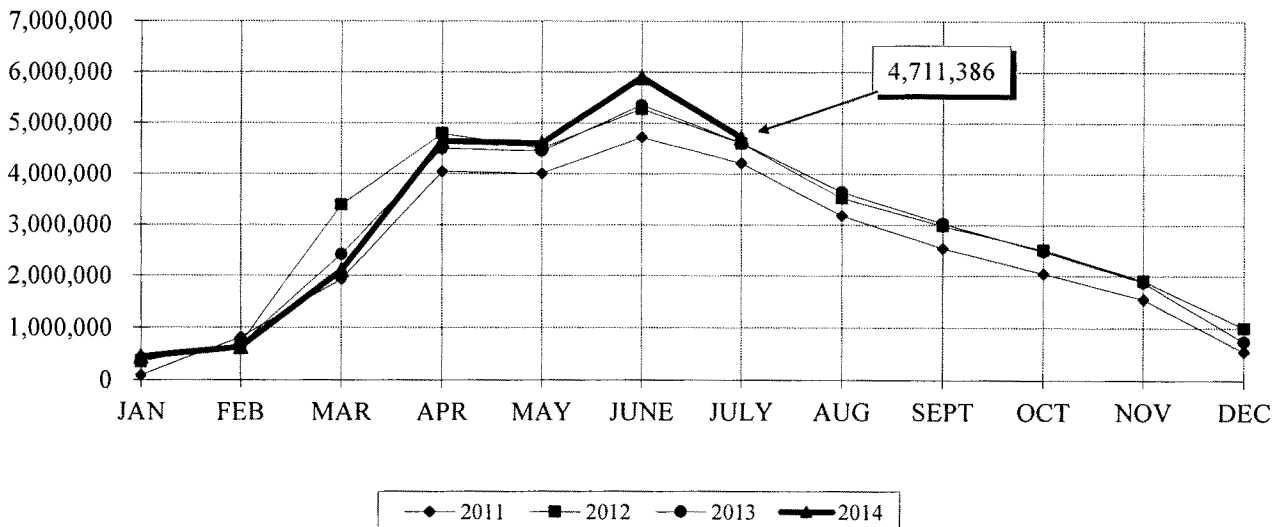


FOR THE MONTH OF JULY, 2014

# GENERAL FUND

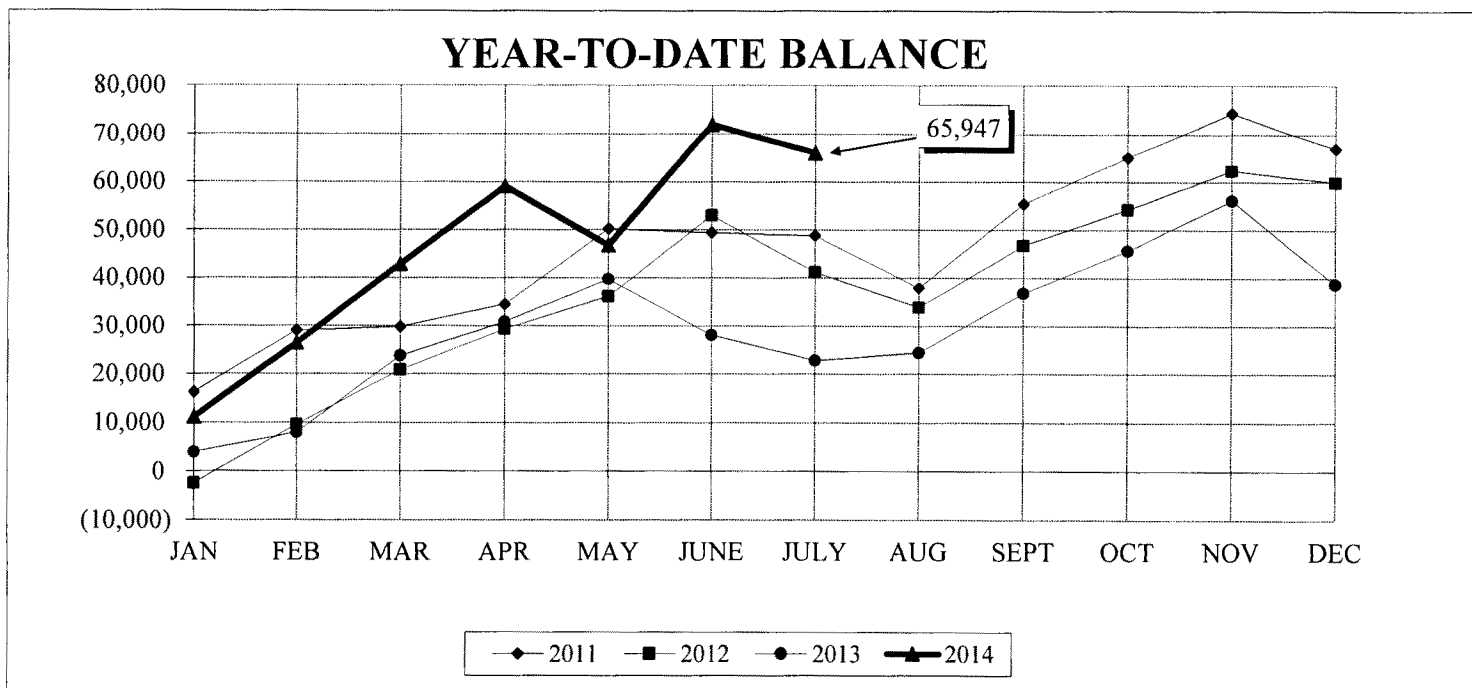
	REVENUES				EXPENSES				SURPLUS (DEFICIT)			
	2014		2013		2014		2013		2014		2013	
	Monthly	YTD	Monthly	YTD	Monthly	YTD	Monthly	YTD	Monthly	YTD	Monthly	YTD
JAN	1,603,903	1,603,903	1,675,435	1,675,435	1,165,755	1,165,755	1,272,314	1,272,314	438,148	438,148	403,121	403,121
FEB	1,666,166	3,270,069	1,635,143	3,310,578	1,475,123	2,640,878	1,360,718	2,633,032	191,043	629,191	274,425	677,546
MAR	2,634,964	5,905,033	2,765,483	6,076,061	1,167,735	3,808,613	1,027,423	3,660,455	1,467,229	2,096,420	1,738,060	2,415,606
APR	3,638,378	9,543,411	3,137,453	9,213,514	1,085,512	4,894,125	1,051,499	4,711,954	2,552,866	4,649,286	2,085,954	4,501,560
MAY	1,184,972	10,728,383	1,024,250	10,237,764	1,230,715	6,124,840	1,074,095	5,786,049	(45,743)	4,603,543	(49,845)	4,451,715
JUNE	2,209,407	12,937,790	1,914,260	12,152,024	917,212	7,042,052	1,014,680	6,800,729	1,292,195	5,895,738	899,580	5,351,295
JULY	482,328	13,420,118	569,066	12,721,090	1,666,680	8,708,732	1,312,693	8,113,422	(1,184,352)	4,711,386	(743,627)	4,607,668
AUG			211,431	12,932,521			1,171,674	9,285,096			(960,243)	3,647,425
SEPT			276,590	13,209,111			896,598	10,181,694			(620,008)	3,027,417
OCT			490,306	13,699,417			1,036,170	11,217,864			(545,864)	2,481,553
NOV			336,733	14,036,150			939,429	12,157,293			(602,696)	1,878,857
DEC			266,954	14,303,104			1,411,915	13,569,208			(1,144,961)	733,896

## YEAR-TO-DATE BALANCE



# STORMWATER UTILITY FUND

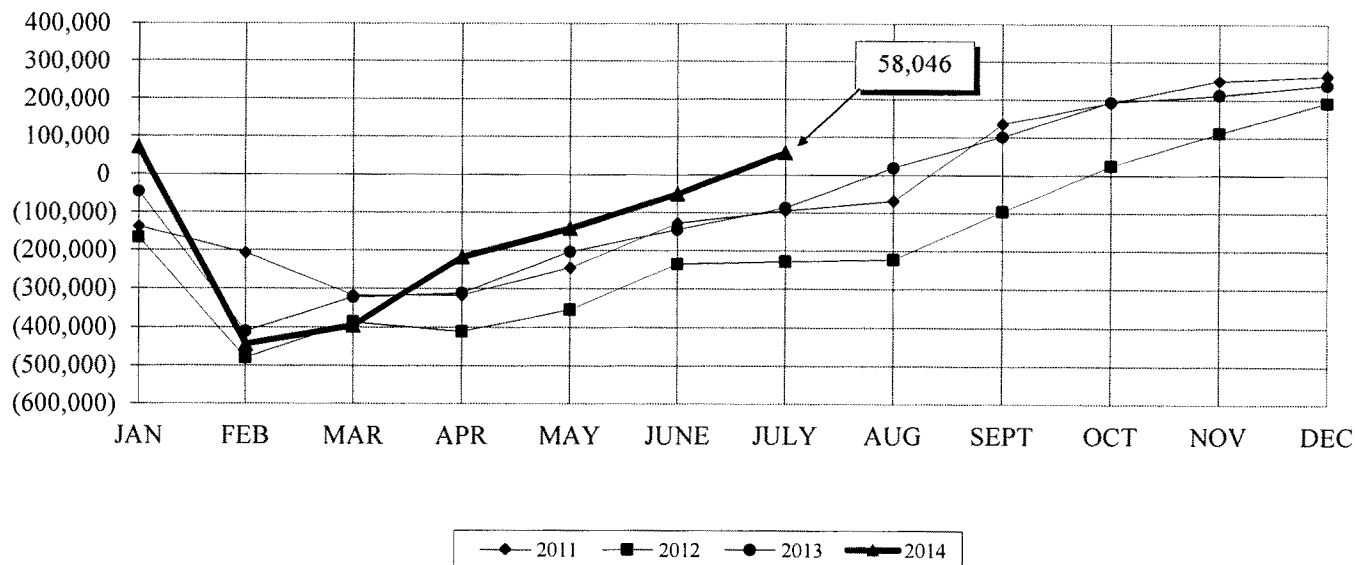
	REVENUES				EXPENSES				SURPLUS (DEFICIT)			
	2014		2013		2014		2013		2014		2013	
	Monthly	YTD	Monthly	YTD	Monthly	YTD	Monthly	YTD	Monthly	YTD	Monthly	YTD
JAN	50,158	50,158	48,747	48,747	39,037	39,037	44,904	44,904	11,121	11,121	3,843	3,843
FEB	48,535	98,693	48,099	96,846	33,295	72,332	43,981	88,885	15,240	26,361	4,118	7,961
MAR	48,968	147,661	48,670	145,516	32,489	104,821	32,947	121,832	16,479	42,840	15,723	23,684
APR	50,549	198,210	48,020	193,536	34,400	139,221	40,947	162,779	16,149	58,989	7,073	30,757
MAY	49,145	247,355	47,691	241,227	61,374	200,595	38,737	201,516	(12,229)	46,760	8,954	39,711
JUNE	54,777	302,132	48,331	289,558	29,607	230,202	59,969	261,485	25,170	71,930	(11,638)	28,073
JULY	49,170	351,302	53,951	343,509	55,153	285,355	59,256	320,741	(5,983)	65,947	(5,305)	22,768
AUG			51,289	394,798			49,651	370,392			1,638	24,406
SEPT			48,589	443,387			36,185	406,577			12,404	36,810
OCT			48,090	491,477			39,236	445,813			8,854	45,664
NOV			48,311	539,788			37,802	483,615			10,509	56,173
DEC			49,002	588,790			66,459	550,074			(17,457)	38,716



## SANITATION SERVICES FUND

	REVENUES				EXPENSES				SURPLUS (DEFICIT)			
	2014		2013		2014		2013		2014		2013	
	Monthly	YTD	Monthly	YTD	Monthly	YTD	Monthly	YTD	Monthly	YTD	Monthly	YTD
JAN	323,116	323,116	320,826	320,826	252,194	252,194	366,956	366,956	70,922	70,922	(46,130)	(46,130)
FEB	325,273	648,389	306,026	626,852	840,598	1,092,792	670,970	1,037,926	(515,325)	(444,403)	(364,944)	(411,074)
MAR	305,278	953,667	304,733	931,585	257,374	1,350,166	216,325	1,254,251	47,904	(396,499)	88,408	(322,666)
APR	481,047	1,434,714	306,012	1,237,597	302,917	1,653,083	295,163	1,549,414	178,130	(218,369)	10,849	(311,817)
MAY	349,307	1,784,021	345,482	1,583,079	273,352	1,926,435	237,895	1,787,309	75,955	(142,414)	107,587	(204,230)
JUNE	386,858	2,170,879	302,134	1,885,213	295,146	2,221,581	242,943	2,030,252	91,712	(50,702)	59,191	(145,039)
JULY	513,107	2,683,986	351,972	2,237,185	404,359	2,625,940	294,207	2,324,459	108,748	58,046	57,765	(87,274)
AUG			314,927	2,552,112			209,345	2,533,804			105,582	18,308
SEPT			286,569	2,838,681			203,999	2,737,803			82,570	100,878
OCT			304,812	3,143,493			215,385	2,953,188			89,427	190,305
NOV			309,673	3,453,166			287,901	3,241,089			21,772	212,077
DEC			344,065	3,797,231			318,108	3,559,197			25,957	238,034

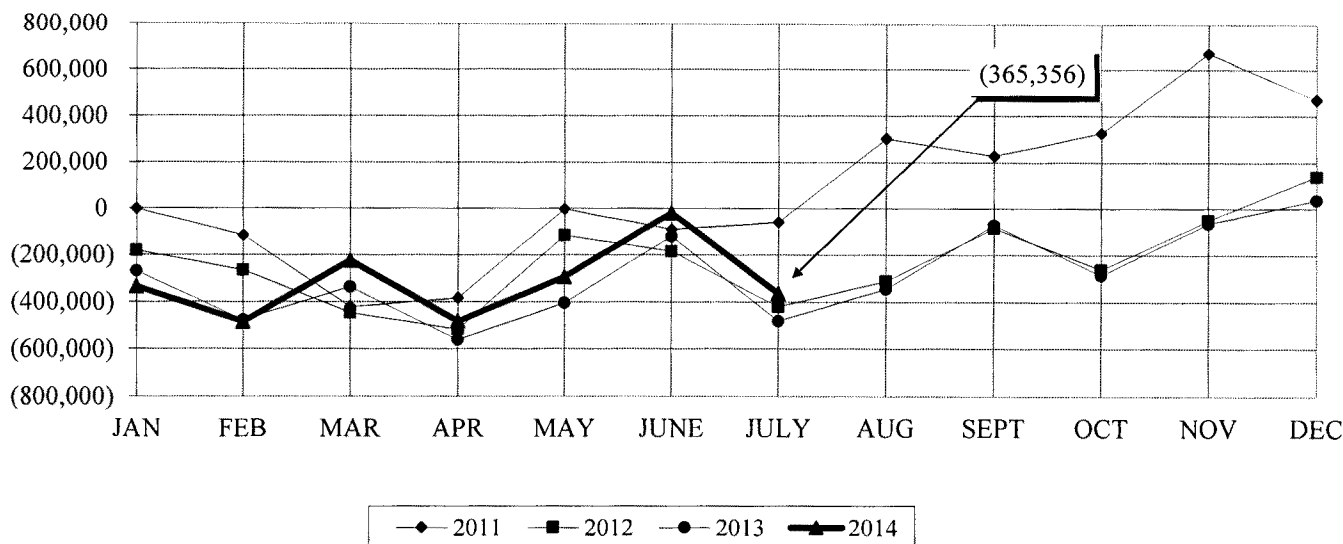
### YEAR-TO-DATE BALANCE



# WATERWORKS & SEWER SYSTEM

	REVENUES				EXPENSES				SURPLUS (DEFICIT)			
	2014		2013		2014		2013		2014		2013	
	Monthly	YTD	Monthly	YTD	Monthly	YTD	Monthly	YTD	Monthly	YTD	Monthly	YTD
JAN	710,055	710,055	800,910	800,910	1,045,653	1,045,653	1,070,933	1,070,933	(335,598)	(335,598)	(270,023)	(270,023)
FEB	835,163	1,545,218	693,955	1,494,865	984,675	2,030,328	901,194	1,972,127	(149,512)	(485,110)	(207,239)	(477,262)
MAR	724,833	2,270,051	671,170	2,166,035	464,573	2,494,901	530,971	2,503,098	260,260	(224,850)	140,199	(337,063)
APR	731,462	3,001,513	706,573	2,872,608	989,661	3,484,562	931,863	3,434,961	(258,199)	(483,049)	(225,290)	(562,353)
MAY	737,188	3,738,701	746,477	3,619,085	548,931	4,033,493	589,448	4,024,409	188,257	(294,792)	157,029	(405,324)
JUNE	797,813	4,536,514	799,155	4,418,240	522,430	4,555,923	515,036	4,539,445	275,383	(19,409)	284,119	(121,205)
JULY	809,585	5,346,099	795,583	5,213,823	1,155,532	5,711,455	1,156,374	5,695,819	(345,947)	(365,356)	(360,791)	(481,996)
AUG			757,383	5,971,206			620,840	6,316,659			136,543	(345,453)
SEPT			757,953	6,729,159			483,451	6,800,110			274,502	(70,951)
OCT			771,292	7,500,451			987,348	7,787,458			(216,056)	(287,007)
NOV			740,796	8,241,247			518,992	8,306,450			221,804	(65,203)
DEC			703,858	8,945,105			601,390	8,907,840			102,468	37,265

## YEAR-TO-DATE BALANCE

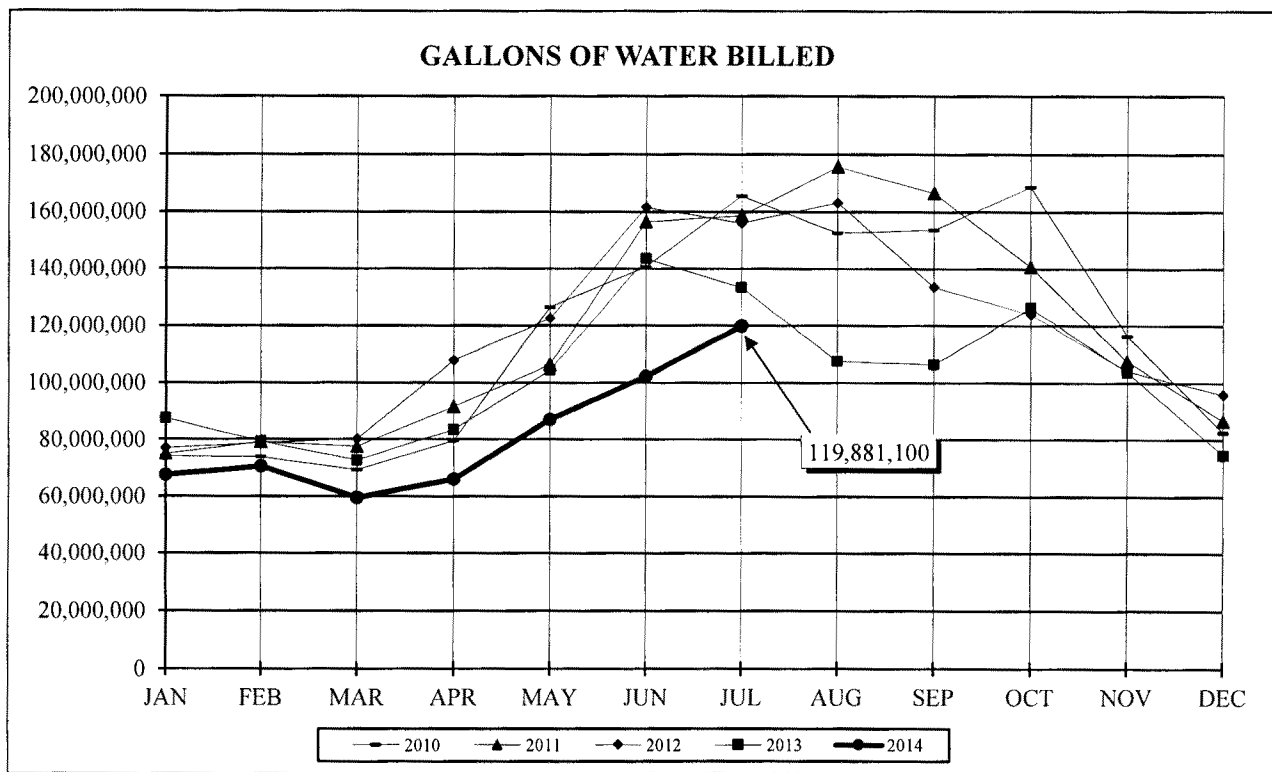


## DEPARTMENT COMPARATIVE DATA (2013- 2014)

OPERATING FUNDS & DEPARTMENTS	2013 YTD EXPENDED	2014 YTD EXPENDED	YTD PERCENT 7 MO = 58.33%	ANNUAL BUDGET	BALANCE
<b>GENERAL FUND:</b>					
CITY COUNCIL	87,000.26	89,935.14	56.74%	158,504.00	68,568.86
ADMINISTRATION	200,559.48	205,635.48	57.96%	354,770.00	149,134.52
JUSTICE & LAW	387,420.68	421,273.06	60.57%	695,498.00	274,224.94
COMMUNITY PROMOTION	84,550.40	84,057.95	51.59%	162,947.00	78,889.05
FINANCE	274,456.35	287,515.63	56.81%	506,089.00	218,573.37
BUILDING STANDARDS	166,773.49	142,139.41	47.30%	300,476.00	158,336.59
PLANNING & DEVELOPMENT	116,389.10	122,159.13	46.52%	262,569.00	140,409.87
CITY BUILDINGS	363,930.12	415,133.00	59.84%	693,694.00	278,561.00
PUBLIC SAFETY	3,799,107.72	4,070,526.74	58.79%	6,924,011.00	2,853,484.26
ENGINEERING	67,714.34	71,048.36	56.77%	125,150.00	54,101.64
STREET LIGHTS & SIGNALS	256,059.05	235,149.97	53.14%	442,542.00	207,392.03
STREETS & DRAINS	423,892.35	496,811.32	63.99%	776,422.00	279,610.68
RECREATION	521,417.61	539,238.80	66.01%	816,868.00	277,629.20
PARKS	283,434.67	279,314.34	58.29%	479,143.00	199,828.66
PROPERTY MAINTENANCE	672,274.61	689,843.58	62.44%	1,104,742.00	414,898.42
COMMUNITY CENTER	100,911.72	97,528.53	52.78%	184,769.00	87,240.47
RVP ACTIVITIES CENTER	407,615.49	461,421.24	60.84%	758,450.00	297,028.76
<b>GENERAL FUND TOTAL</b>	<b>8,213,507.44</b>	<b>8,708,731.68</b>	<b>59.06%</b>	<b>14,746,644.00</b>	<b>6,037,912.32</b>
<b>STORMWATER UTILITY FUND:</b>					
STORMWATER	320,740.60	285,354.93	48.08%	593,476.00	308,121.07
<b>STORMWATER FUND TOTAL</b>	<b>320,740.60</b>	<b>285,354.93</b>	<b>48.08%</b>	<b>593,476.00</b>	<b>308,121.07</b>
<b>SANITATION FUND:</b>					
SANITATION	1,659,831.58	1,875,988.57	70.98%	2,643,163.00	767,174.43
RECYCLING	524,936.03	603,076.58	61.35%	982,966.00	379,889.42
TRANSFERS	139,691.00	146,875.00	100.00%	146,875.00	0.00
<b>SANITATION FUND TOTAL</b>	<b>2,324,458.61</b>	<b>2,625,940.15</b>	<b>69.60%</b>	<b>3,773,004.00</b>	<b>1,147,063.85</b>
<b>O &amp; M FUND:</b>					
UTILITIES FINANCE	329,918.94	393,497.69	63.67%	618,050.00	224,552.31
UTILITIES ADMINISTRATION	308,781.15	352,726.05	57.11%	617,652.00	264,925.95
WATER OPERATIONS	393,724.68	373,037.03	54.55%	683,832.00	310,794.97
WATER PRODUCTION	821,815.65	838,098.45	63.32%	1,323,670.00	485,571.55
WASTEWATER OPERATIONS	1,992,458.07	1,889,742.62	61.89%	3,053,601.00	1,163,858.38
TRANSFERS	375,302.00	363,171.00	100.00%	363,171.00	0.00
<b>O &amp; M FUND TOTAL</b>	<b>4,222,000.49</b>	<b>4,210,272.84</b>	<b>63.22%</b>	<b>6,659,976.00</b>	<b>2,449,703.16</b>

# GALLONS OF WATER BILLED

	2009	2010	2011	2012	2013	2014
JAN	85,783,500	74,185,400	75,018,000	76,992,000	87,534,100	67,527,800
FEB	76,454,000	73,922,200	79,135,200	78,702,600	79,331,600	70,558,900
MAR	77,557,500	69,375,600	77,488,300	80,193,900	72,713,000	59,501,800
APR	86,679,800	79,565,000	91,496,800	107,772,100	83,519,700	66,036,800
MAY	105,741,300	126,648,400	106,319,100	122,523,900	104,337,300	87,006,600
JUN	129,746,500	140,668,300	156,506,100	161,618,200	143,562,600	102,185,100
JUL	147,243,100	165,623,300	158,698,900	156,023,900	133,404,400	119,881,100
AUG	164,823,200	152,583,800	175,693,700	163,228,300	107,485,366	
SEP	136,863,500	153,757,700	166,666,600	133,551,000	106,427,500	
OCT	107,807,400	168,758,200	140,751,700	124,179,100	126,482,300	
NOV	86,245,400	116,615,700	107,674,300	104,181,700	103,845,700	
DEC	83,916,000	82,517,900	86,622,600	95,810,200	74,656,800	
TOTAL	1,288,861,200	1,404,221,500	1,422,071,300	1,404,776,900	1,223,300,366	572,698,100







**NORTH AUGUSTA  
DEPARTMENT OF  
PUBLIC SERVICES**

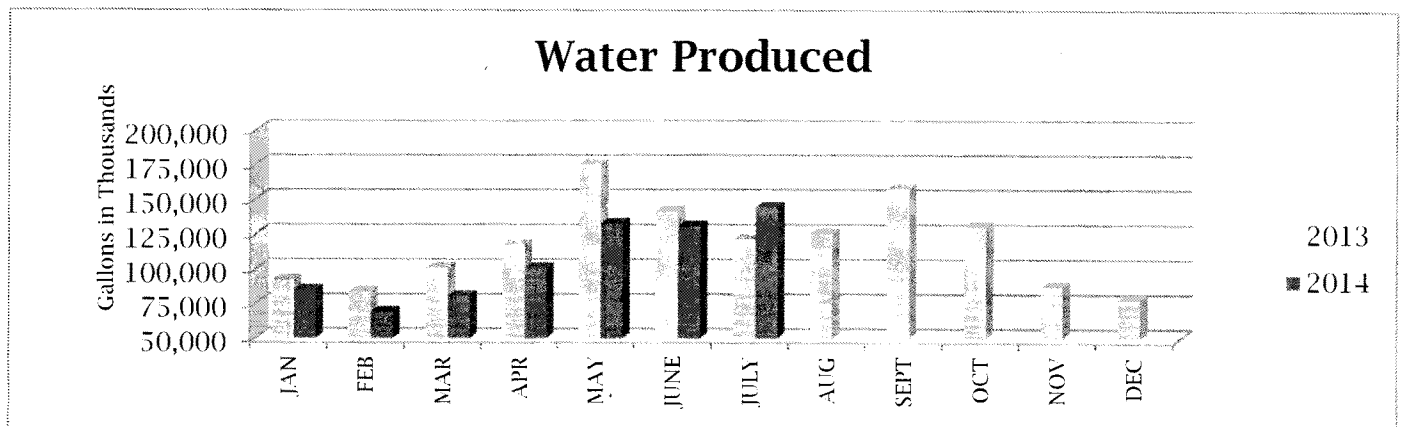
***JAMES SUTTON  
DIRECTOR***

**MONTHLY REPORT  
FOR**

**July, 2014**

# WATER OPERATIONS AND MAINTENANCE

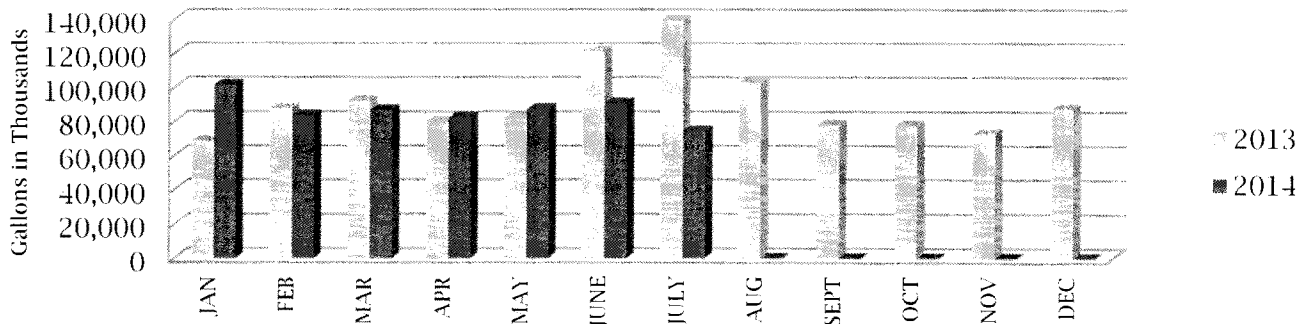
	Year	JAN	FEB	MAR	APR	MAY	JUNE	JULY	AUG	SEPT	OCT	NOV	DEC	YTD Total
Customers Inside City	2014	8,496	8,524	8,497	8,552	8,545	8,591	8,554						
	2013	8,467	8,498	8,497	8,477	8,492	8,492	8,501	8,525	8,499	8,510	8,507	8,534	
Customers Outside City	2014	3,119	3,138	3,127	3,120	3,128	3,128	3,116						
	2013	3,114	3,136	3,131	3,127	3,130	3,127	3,111	3,099	3,112	3,109	3,114	3,127	
Total Customers	2014	11,615	11,662	11,624	11,672	11,673	11,719	11,670	0	0	0	0	0	
	2013	11,581	11,634	11,628	11,604	11,622	11,619	11,612	11,624	11,611	11,619	11,621	11,661	
# of Water Taps Paid	2014	2	5	24	6	3	8	5						53
	2013	8	1	0	3	5	5	5	1	2	1	1	1	33
Water Tap Fees Collected	2014	\$1,600	\$57,342	\$22,018	\$3,100	\$2,500	\$6,300	\$4,313						\$97,173
	2013	\$9,650	\$0	\$0	\$1,700	\$2,600	\$4,846	\$6,561	\$400	\$800	\$400	\$0	\$400	\$27,357
Water Lines Installed (LF)	2014	0	0	0	230	318	0	360						908
	2013	0	450	1,305	880	1,631	690	0	570	0	0	0	83	5,609
Water Produced (gals in thousands)	2014	85,068	69,220	80,897	100,939	133,161	131,054	144,867						745,206
	2013	92,125	83,990	101,288	117,797	175,639	141,965	121,655	125,917	157,924	130,742	87,460	78,314	1,414,816
Water Billed (gals in thousands)	2014	68,180	71,048	59,817	66,696	88,887	108,848	131,822						595,298
	2013	88,706	79,982	73,139	84,510	105,864	149,059	139,359	112,673	124,570	133,995	108,851	76,023	1,276,731
Water Billed/ Water Produced	2014	80%	103%	74%	66%	67%	83%	91%						80%
	2013	96%	95%	72%	72%	60%	105%	115%	89%	79%	102%	124%	97%	90%
Water Loss due to line breaks/fire hydrant usage, etc. (gals in thousands)	2014	105	48	24	29	600	32	48						886
	2013	18	745	23	17	1,097	1,249	1,004	278	447	117	36	8	5,039
Water Loss/ Water Billed	2014	0.154%	0.068%	0.040%	0.043%	0.675%	0.029%	0.036%						0.149%
	2013	0.020%	0.931%	0.031%	0.020%	1.036%	0.838%	0.720%	0.247%	0.359%	0.087%	0.033%	0.011%	0.395%



# WASTEWATER OPERATIONS AND MAINTENANCE

	Year	JAN	FEB	MAR	APR	MAY	JUNE	JULY	AUG	SEPT	OCT	NOV	DEC	YTD Total
Customers Inside City	2014	9,949	9,998	9,982	10,049	10,043	10,093	<b>10,043</b>						
	2013	9,869	9,907	9,915	9,904	9,918	10,018	<b>9,856</b>	9,956	9,928	9,939	9,941	9,973	
Customers Outside City	2014	1,003	1,004	1,004	1,002	1,001	1,001	<b>986</b>						
	2013	990	1,000	995	998	999	1,001	<b>995</b>	993	1,000	995	995	1,006	
Total Customers	2014	10,952	11,002	10,986	11,051	11,044	11,094	<b>11,029</b>	0	0	0	0	0	
	2013	10,859	10,907	10,910	10,902	10,917	11,019	<b>10,851</b>	10,949	10,928	10,934	10,936	10,979	
# of Wastewater Taps Paid	2014	3	7	31	11	9	13	<b>5</b>						79
	2013	19	4	9	10	24	9	<b>13</b>	5	8	4	8	4	117
Wastewater Tap Fees Collected	2014	\$1,950	\$32,934	\$27,259	\$7,605	\$7,550	\$10,200	<b>\$3,550</b>						\$91,048
	2013	\$23,663	\$3,100	\$7,035	\$6,900	\$17,040	\$7,493	<b>\$7,310</b>	\$3,700	\$5,875	\$2,320	\$4,955	\$2,600	\$91,991
Wastewater Billed (gals in thousands)	2014	117,514	127,748	116,418	120,767	114,677	116,483	<b>111,366</b>						824,973
	2013	109,762	105,986	101,701	110,025	111,414	113,324	<b>112,872</b>	118,378	114,772	110,987	114,223	109,949	1,333,393
Wastewater Metered by ACP SA (gals in thousands)	2014	161,477	137,979	145,853	135,397	141,197	139,914	<b>126,939</b>						988,756
	2013	114,657	132,500	142,430	131,595	135,302	173,051	<b>197,094</b>	156,429	127,901	130,720	123,119	141,291	1,706,089
Edgefield County Wastewater Metered	2014	60,085	54,213	58,949	52,935	53,810	49,086	<b>52,291</b>						381,369
	2013	46,151	44,468	50,217	51,675	53,496	51,888	<b>57,817</b>	53,416	49,855	53,043	50,074	53,693	615,793
North Augusta Flow (gals in thousands)	2014	101,392	83,766	86,904	82,462	87,387	90,828	<b>74,648</b>	0	0	0	0	0	607,387
	2013	68,506	88,032	92,213	79,920	81,806	121,163	<b>139,277</b>	103,013	78,046	77,677	73,045	87,598	1,090,296
Backups Customer Line	2014	24	23	14	14	5	11	<b>11</b>						102
	2013	19	17	24	22	14	11	<b>10</b>	11	8	12	7	24	179
Backups City Main line	2014	4	1	2	4	1	1	<b>3</b>						16
	2013	4	4	2	5	3	2	<b>2</b>	1	1	0	0	1	25

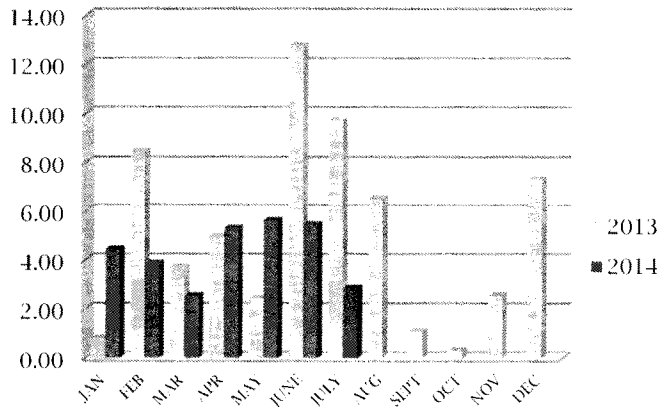
## Wastewater Treated



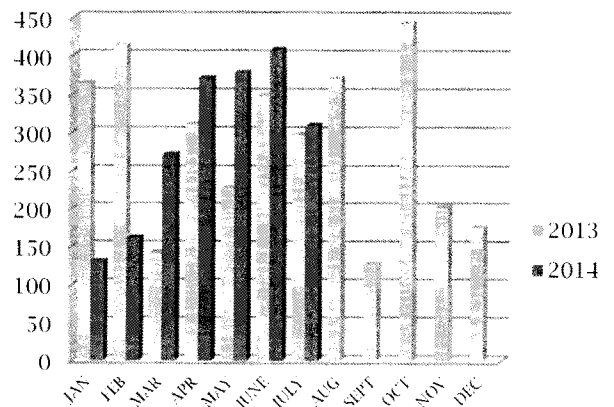
# METER DIVISION

	Year	JAN	FEB	MAR	APR	MAY	JUNE	JULY	AUG	SEPT	OCT	NOV	DEC	YTD Total
Existing Service Activations	2014	110	137	145	81	123	159	132						887
	2013	107	118	118	128	112	128	109	154	123	125	119	114	1,455
Existing Service Deactivations	2014	146	88	108	77	94	162	132						807
	2013	88	110	113	139	105	116	122	169	132	132	98	93	1,417
Delinquent Shut Offs	2014	130	161	271	371	378	408	309						2,028
	2013	364	414	141	311	226	348	297	371	126	443	202	175	3,418
Delinquent Restores	2014	146	130	222	242	270	311	233						1,554
	2013	261	298	135	197	221	309	172	230	110	267	209	151	2,560
After-Hours Restores	2014	14	21	27	30	39	40	32						203
	2013	48	52	26	43	35	36	22	46	7	61	26	21	423
Meters Read	2014	10,059	10,104	10,072	10,105	10,128	10,132	10,115						70,715
	2013	10,039	10,087	10,065	10,045	10,081	10,067	10,078	10,071	10,055	10,064	10,065	10,102	120,819
Recheck Meter Readings	2014	181	337	170	81	102	122	113						1,106
	2013	150	85	109	55	70	98	61	128	102	113	105	79	1,155
Rainfall (inches)	2014	4.46	3.87	2.56	5.30	5.64	5.46	2.86						30.15
	2013	0.82	8.46	3.72	4.96	2.44	12.76	9.73	6.49	1.10	0.32	2.57	7.33	60.70

**Rainfall per Month**



**Delinquent Shut Offs**



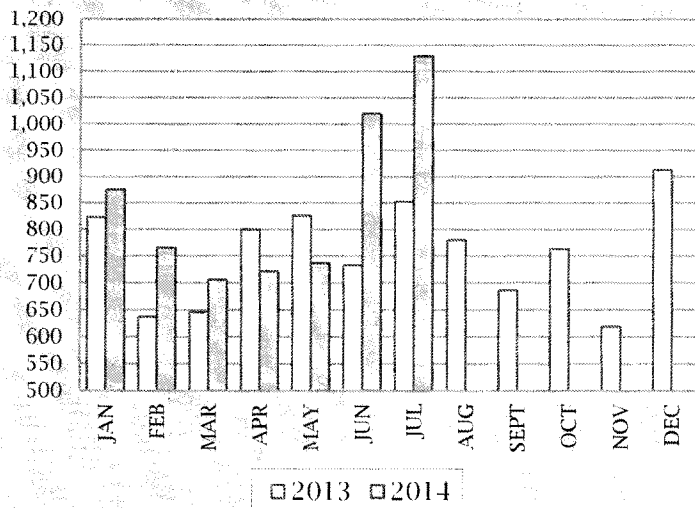
# CODE COMPLIANCE

	Year	JAN	FEB	MAR	APR	MAY	JUNE	JULY	AUG	SEPT	OCT	NOV	DEC	YTD
Property Maintenance	2014	38	18	37	61	68	80	76						378
	2013	30	31	30	46	72	68	66	75	56	52	31	29	586
Property Liens/ Contractor Utilized	2014	0	0	0	0	4	0	3						7
	2013	4	4	3	7	5	5	5	6	3	8	0	0	50
Swimming Pools	2014	0	0	1	0	3	3	2						9
	2013	1	0	0	3	4	4	2	0	0	1	0	0	15
Inoperable Vehicle	2014	14	11	13	13	6	10	9						76
	2013	10	14	15	17	13	15	13	29	11	14	14	12	177
Recreational Vehicles RV/Boat/Utility Trl	2014	13	9	9	10	14	11	13						79
	2013	26	13	12	6	11	16	14	10	10	8	5	9	140
Illegally Parked Vehicle	2014	0	0	2	0	1	1	0						4
	2013	1	1	0	6	2	0	0	0	2	2	8	2	24
Out of State Tags	2014	47	38	36	48	25	30	37						261
	2013	30	5	4	11	4	50	55	51	48	29	50	46	383
Commercial Vehicles/Equipment	2014	0	0	0	2	0	1	2						5
	2013	1	2	2	6	6	1	1	0	0	1	0	1	21
Court Summons Issued	2014	0	2	0	0	2	0	0						4
	2013	0	4	1	1	0	0	0	2	2	3	0	0	13
Business License Inspections	2014	0	39	5	7	7	10	14						82
	2013	4	2	4	2	6	32	22	4	1	10	5	3	95
Signs/Banners	2014	94	79	119	150	168	241	255						1106
	2013	182	136	157	85	151	108	264	125	167	151	88	95	1709
Rollcarts left in R/W	2014	47	52	0	0	0	0	0						99
	2013	181	308	333	90	46	0	70	53	99	47	57	44	1328
Rollcart Removal Fees	2014	\$235	\$270	\$0	\$0	\$0	\$0	\$0						\$505
	2013	\$915	\$1,605	\$1,710	\$455	\$230	\$0	\$380	\$265	\$520	\$245	\$285	\$220	\$6,830

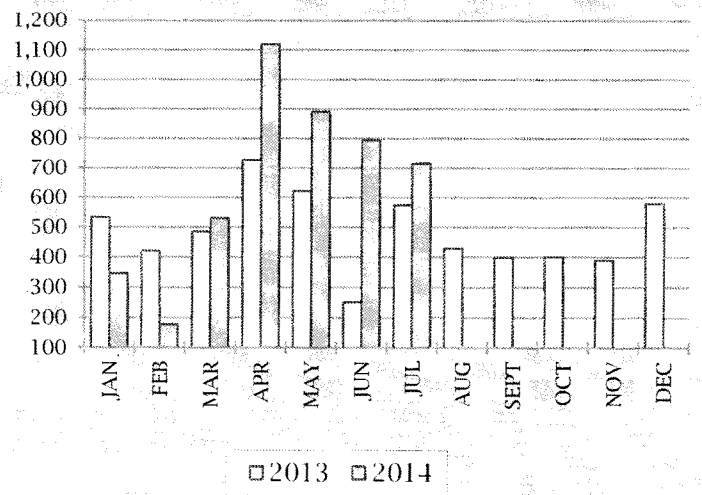
## RESIDENTIAL SANITATION

		JAN	FEB	MAR	APR	MAY	JUN	JUL	AUG	SEPT	OCT	NOV	DEC	YTD
<b>Customers Inside City</b>	2014	7,682	7,707	7,723	7,757	7,773	7,779	<b>7,780</b>						
	2013	7,597	7,640	7,640	7,633	7,660	7,658	<b>7,685</b>	7,668	7,632	7,663	7,662	7,680	
<b>Customers Outside City</b>	2014	286	281	281	284	281	285	<b>279</b>						
	2013	281	282	279	280	282	281	<b>281</b>	283	287	282	285	288	
<b>Customers Multi-Unit</b>	2014	1,800	1,797	1,795	1,799	1,799	1,798	<b>1,797</b>						
	2013	1,788	1,789	1,787	1,784	1,779	1,787	<b>1,706</b>	1,804	1,798	1,795	1,797	1,803	
<b>Total Customers</b>	2014	9,768	9,785	9,799	9,840	9,853	9,862	<b>9,856</b>	0	0	0	0	0	
	2013	9,666	9,711	9,706	9,697	9,721	9,726	<b>9,672</b>	9,755	9,717	9,740	9,744	9,771	
<b>Garbage Landfilled</b>	2014	875	765	706	722	737	1,020	<b>1,129</b>						5,954
	2013	823	637	646	800	826	733	<b>853</b>	780	686	763	619	913	9,079
<b>Yard Trash (tons)</b>	2014	346	177	530	1,119	891	794	<b>716</b>						4,573
	2013	533	421	485	728	621	251	<b>575</b>	429	398	401	390	579	5,811
<b>Yard Trash Cans</b>	2014	544	545	545	548	553	557	<b>555</b>						
	2013	536	535	535	533	538	538	<b>536</b>	536	538	559	542	542	
<b>Fees Collected</b>	2014	\$166,823	\$162,192	\$162,265	\$163,044	\$162,324	\$163,341	<b>\$160,810</b>						\$1,140,801
	2013	\$160,115	\$160,614	\$160,369	\$160,440	\$159,369	\$160,964	<b>\$159,494</b>	\$161,091	\$161,852	\$161,073	\$151,354	\$161,881	\$1,918,616

**RESIDENTIAL GARBAGE TONS LANDFILLED**



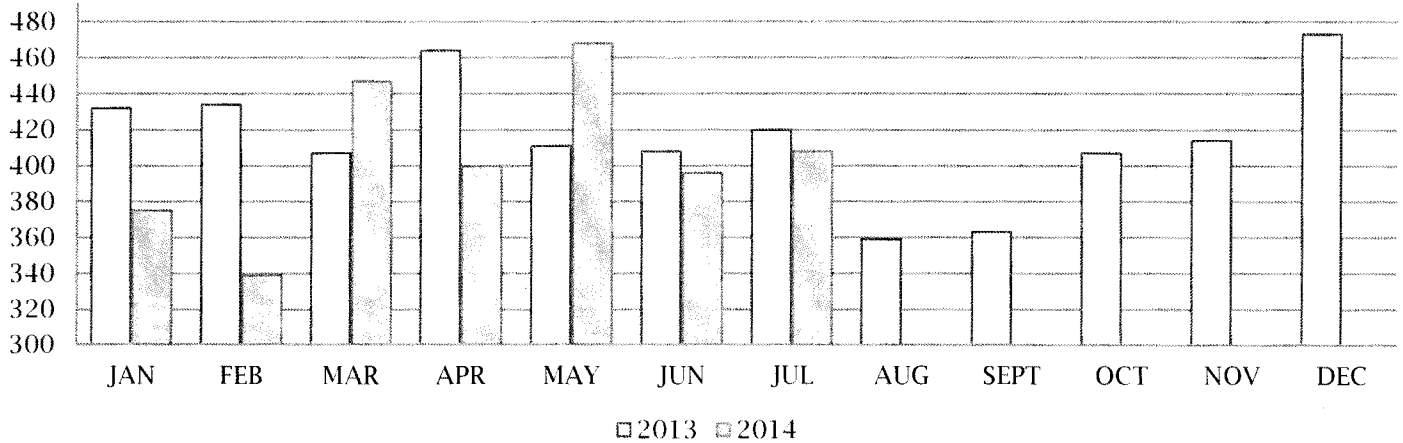
**RESIDENTIAL YARD TRASH TONS LANDFILLED**



## COMMERCIAL SANITATION

		JAN	FEB	MAR	APR	MAY	JUN	JUL	AUG	SEPT	OCT	NOV	DEC	YTD
Customers Inside City	2014	463	465	464	463	467	467	468						
	2013	455	455	454	450	450	450	452	454	459	460	462	465	
Customers Outside City	2014	6	6	6	6	6	6	6						
	2013	7	7	7	7	6	6	6	6	6	6	6	6	
Total Customers	2014	469	471	470	469	473	473	474	0	0	0	0	0	
	2013	462	462	461	457	456	456	458	460	465	466	468	471	
Garbage Landfilled	2014	375	339	447	400	468	396	408						2833
	2013	432	434	407	464	411	408	420	359	363	407	414	473	4992
Service Fees	2014	\$51,778	\$51,871	\$51,627	\$51,907	\$52,015	\$52,599	\$50,552						\$362,349
	2013	\$52,315	\$52,244	\$51,860	\$51,963	\$51,649	\$51,776	\$52,284	\$52,032	\$51,340	\$51,388	\$51,507	\$51,613	\$621,971
Landfill Fees	2014	\$13,605	\$12,186	\$16,087	\$14,409	\$16,830	\$14,251	\$14,821						\$102,189
	2013	\$16,365	\$15,182	\$14,248	\$16,230	\$14,401	\$14,222	\$15,200	\$14,431	\$13,083	\$14,560	\$14,913	\$17,260	\$180,095

## COMMERCIAL GARBAGE - TONS LANDFILLED



## STREET SWEEPING

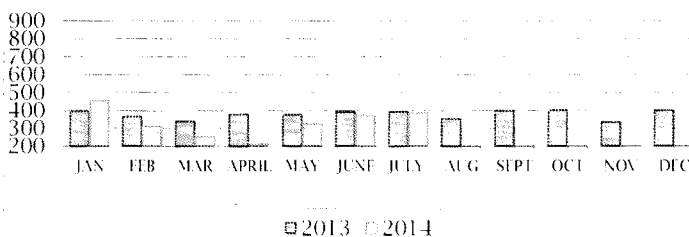
		JAN	FEB	MAR	APR	MAY	JUN	JUL	AUG	SEPT	OCT	NOV	DEC	YTD
Sweeping Hours	2014	66	48	90	75	56	40	28						404
	2013	100	115	100	85	97	108	103	98	64	83	128	101	1182
Sweeping Miles	2014	74	59	62	65	63	83	35						441
	2013	334	280	265	243	245	272	213	228	192	120	211	124	2727
Sweeping Tons Collected	2014	46	18	33	42	23	29	10						201
	2013	83	44	40	44	39	31	31	31	23	58	48	67	540

# RECYCLING

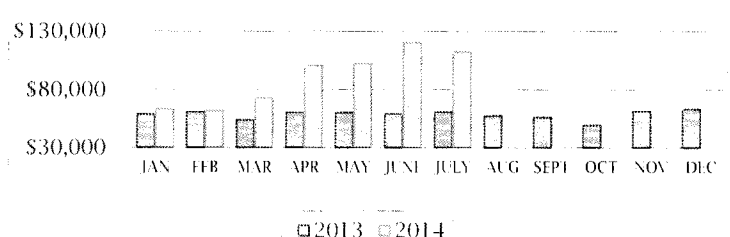
8/8/2014

		JAN	FEB	MAR	APR	MAY	JUNE	JULY	AUG	SEPT	OCT	NOV	DEC	YTD		
<b>ALL SOLID WASTE INCLUDING RECYCLABLES TAKEN IN (TONS)</b>	North Augusta Res/Comm	2014	795	488	736	431	550	839	806						4645	
		2013	741	700	694	909	930	830	986	862	782	829	713	996	9972	
	City of Aiken	2014	196	198	151	171	184	156	178						1234	
		2013	168	141	151	181	155	142	173	152	177	190	133	208	1971	
	Aiken County	2014	134	90	127	131	145	135	134						896	
		2013	123	102	109	132	127	117	117	113	110	107	130	179	1466	
	SRNS	2014	108	93	143	109	133	138	173						897	
		2013	131	171	140	141	143	144	195	142	124	117	91	139	1678	
	Aug Disposal/ Other Agencies	2014	549	507	554	1396	1501	1411	1467						7385	
		2013	7	11	7	15	22	15	7	39	78	102	403	362	1068	
	Total Incoming	2014	1782	1376	1711	2238	2513	2679	2758	0	0	0	0	0	15057	
		2013	1170	1125	1101	1378	1377	1248	1478	1308	1271	1345	1470	1884	16155	
	<b>NON-RECYCLABLES TAKEN TO LANDFILL (TONS)</b>	North Aug/Aiken/Aiken Cty	2014	807	661	706	536	671	980	833						5194
			2013	321	293	324	359	381	274	350	326	414	897	612	834	5385
SRNS		2014	61	58	86	73	77	74	106						535	
		2013	79	112	85	95	91	89	113	95	76	76	58	73	1042	
Aug Disposal/ Other Agencies		2014	431	453	453	1452	1498	1132	1368						6787	
		2013	0	0	0	0	0	0	0	0	0	17	310	241	568	
Total Landfilled		2014	1299	1172	1245	2061	2246	2186	2307	0	0	0	0	0	12516	
		2013	400	405	409	454	472	363	463	421	490	990	980	1148	6995	
<b>RECYCLABLES PROCESSED (TONS)</b>		North Aug/Aiken/Aiken Cty	2014	318	115	308	197	208	150	285	0	0	0	0	0	1581
			2013	711	650	630	863	831	815	926	801	655	229	364	549	8024
	%	2014	28%	15%	30%	27%	24%	13%	25%	0%	0%	0%	0%	0%	23%	
		2013	69%	69%	66%	71%	69%	75%	73%	71%	61%	20%	37%	40%	60%	
	SRNS	2014	47	35	57	36	56	64	67	0	0	0	0	0	362	
		2013	52	59	55	46	52	55	82	47	48	41	33	66	636	
	%	2014	44%	38%	40%	33%	42%	46%	39%	0%	0%	0%	0%	0%	40%	
		2013	40%	35%	39%	33%	37%	38%	42%	33%	39%	35%	36%	47%	38%	
	Aug Disposal/ Other Agencies	2014	118	54	101	-56	3	279	99	0	0	0	0	0	598	
		2013	7	11	7	15	22	15	7	39	78	85	93	121	500	
	%	2014	21%	11%	18%	-4%	0%	20%	7%	0%	0%	0%	0%	0%	8%	
		2013	100%	100%	100%	100%	100%	100%	100%	100%	100%	83%	23%	33%	47%	
	<b>Total Recyclables Processed</b>	2014	455	311	252	210	325	374	387	0	0	0	0	0	2314	
		2013	397	364	340	379	377	392	396	354	400	401	334	400	4534	
<b>Material Sales &amp; Processing Revenue</b>	2014	\$63,458	\$61,560	\$72,795	\$100,710	\$102,177	\$120,335	\$112,218						\$633,253		
	2013	\$58,705	\$60,821	\$54,061	\$60,153	\$60,120	\$59,110	\$60,742	\$57,296	\$55,891	\$49,343	\$61,544	\$63,560	\$701,346		

**RECYCLING MATERIALS PROCESSED**



**SALES & PROCESSING REVENUE**



This Month: July 2014



***DEPARTMENT OF  
PLANNING AND DEVELOPMENT***

***SCOTT STERLING, AICP  
INTERIM DIRECTOR***

***MONTHLY REPORT  
FOR  
JULY 2014***

**City of North Augusta**  
**Department of Planning and Development**  
**Monthly Report for July 2014**

Item	This Month		Year To Date		Same Month Last Year		Last Year To Date	
	Approved	Denied	Approved	Denied	Approved	Denied	Approved	Denied
<b>Development Applications</b>								
<b>Subdivisions</b>								
Major Subdivision Plans	0	0	2	0	0	0	0	0
Planned Acres	0.00	0.00	29.49	0.00	0.00	0.00	0.00	0.00
Planned Lots	0	0	100	0	0	0	0	0
Minor Subdivision Plans	2	0	6	0	0	0	8	0
Platted New Lots	2	0	11	0	0	0	-2	0
Major Subdivision Plans	0	0	1	0	1	0	1	0
Platted Acres	0.00	0.00	6.29	0.00	16.43	0.00	16.43	0.00
Platted Lots	0	0	32	0	34	0	34	0
<b>Site Plans</b>								
Minor Site Plans	0	0	8	0	0	0	6	0
Major Site Plans	0	0	1	0	0	0	0	0
Total Site Plan Acres	0.00	0.00	39.83	0.00	0.00	0.00	4.45	0.00
<b>Planned Developments</b>								
PD Gen Dev Plans/Major Mod.	0	0	0	0	0	0	0	0
PD Acres	0.00	0.00	0.00	0.00	0.00	0.00	0.00	0.00
PDGDP Minor Modifications	0	0	0	0	0	0	0	0
<b>Annexations</b>								
Applications	1	0	4	0	0	0	5	0
Parcels	2	0	5	0	0	0	5	0
Acres	10.00	0.00	16.00	0.00	0.00	0.00	2.68	0.00
<b>Zoning/Text Amendments</b>								
Rezoning	1	0	1	0	1	0	1	0
Parcels	2	0	2	0	2	0	2	0
Acres	3.69	0.00	3.69	0.00	52.96	0.00	52.96	0.00
Conditional Zoning	0	0	0	0	0	0	0	0
Parcels	0	0	0	0	0	0	0	0
Acres	0.00	0.00	0.00	0.00	0.00	0.00	0.00	0.00
Text Amendments	0	0	0	0	0	0	0	0
<b>Other</b>								
Certificates of Zoning Compliance	7	0	75	0	11	0	82	1
Zoning Confirmation Letters	3	0	7	0	1	0	13	0
Residential Site Reviews	12	0	88	0	18	0	132	0
Sign Permits	3	0	24	0	2	0	21	0
Planning Projects	0	0	4	0	0	0	0	0
Communications Towers	0	0	0	0	0	0	0	0
Conditional Use Permits	0	0	1	0	0	0	2	0

**City of North Augusta**  
**Department of Planning and Development**  
**Monthly Report for July 2014**

Item	This Month		Year To Date		Same Month Last Year		Last Year To Date	
	Approved	Denied	Approved	Denied	Approved	Denied	Approved	Denied
<b>Appeals</b>								
Variances	0	0	0	0	0	0	0	0
Special Exceptions	0	0	0	0	0	0	0	0
Administrative Decisions	0	0	0	0	0	0	0	0
Waivers	0	0	0	0	0	0	0	0
<b>Fees Collected</b>								
Development Applications	\$1,130.00		\$7,620.00		\$40.00		\$4,355.00	
Appeals	\$0.00		\$0.00		\$0.00		\$0.00	
Maps/Publications	\$0.00		\$60.00		\$0.00		\$0.00	
Special Review Fees	\$0.00		\$0.00		\$400.00		\$600.00	
<b>Total Fees</b>	<b>\$1,130.00</b>		<b>\$7,680.00</b>		<b>\$440.00</b>		<b>\$4,955.00</b>	

**City of North Augusta  
Department of Planning and Development**

## Staff Approvals - 2014

### Residential Site Plans - July 2014

Application Number	Tax Parcel Number	Applicant	Legal Description	Zone	Approval Date	Structure
RSP 14-077	007-13-23-012	Pete Alewine Pool Company	512 Front Street	PD	7/2/2014	Pool
RSP 14-078	014-00-02-034	Ranu Hallman	316 RiverNorth Drive	PD	7/2/2014	Pool
RSP 14-079	001-16-03-007	Pete Alewine Pool Company	108 Gerhard Ridge	PD	7/2/2014	Pool
RSP 14-080	005-09-11-030	Bill Beazley Homes	18 Blair Drive	PD	7/9/2014	New
RSP 14-081	006-13-13-005	Angela Willis	1814 Oriole Drive	R-7	7/9/2014	Room Addition
RSP 14-082	005-14-10-002	Tim Oerman	112 Oakbrook Drive	PD	7/14/2014	Pool
RSP 14-083	002-15-02-012	Alpha Development & Residential	828 River Bluff Road	PD	7/14/2014	New
RSP 14-084	007-13-11-008	Patrick Zier	84 Fulton Street	PD	7/18/2014	New
RSP 14-085	007-19-03-015	Allan and Klara Joseph	378 East Shoreline Drive	PD	7/18/2014	Retaining Wall
RSP 14-086	007-19-03-014	Abdullah and Sue Ann Abdulla	370 East Shoreline Drive	PD	7/18/2014	Retaining Wall
RSP 14-087	006-15-10-012	Erin Piercy-Doyle	2008 Towhee Avenue	R-7	7/23/2014	Room Addition
RSP 14-088	007-11-05-063	Jagadish and Savitha Memula	68 Woodlawn Lane	R-7	7/23/2014	Deck

### Minor Subdivision Plats - July 2014

Application Number	Tax Parcel Number	Applicant	Legal Description	Zone	Approval Date	Acres	Lots
MP 14-004	012-08-01-001	Kellogg Corp.	South of Highway 126	CR	7/10/2014	3.69	2
MP 14-005	010-10-07-001	Byron Morris	Merovan Drive	TC	7/25/2014	0.27	0

### Annexations - July 2014

Application Number	Tax Parcel Number	Applicant	Legal Description	Zone	Approval Date	Acres
ANX 14-004	002-08-03-020 006-05-02-005	TrueNorth Church	West Martintown Road	R-10	7/21/2014	10.00

***NORTH AUGUSTA  
PUBLIC SAFETY DEPARTMENT***

**John Thomas, Director**

Submitted by: C. Luckey

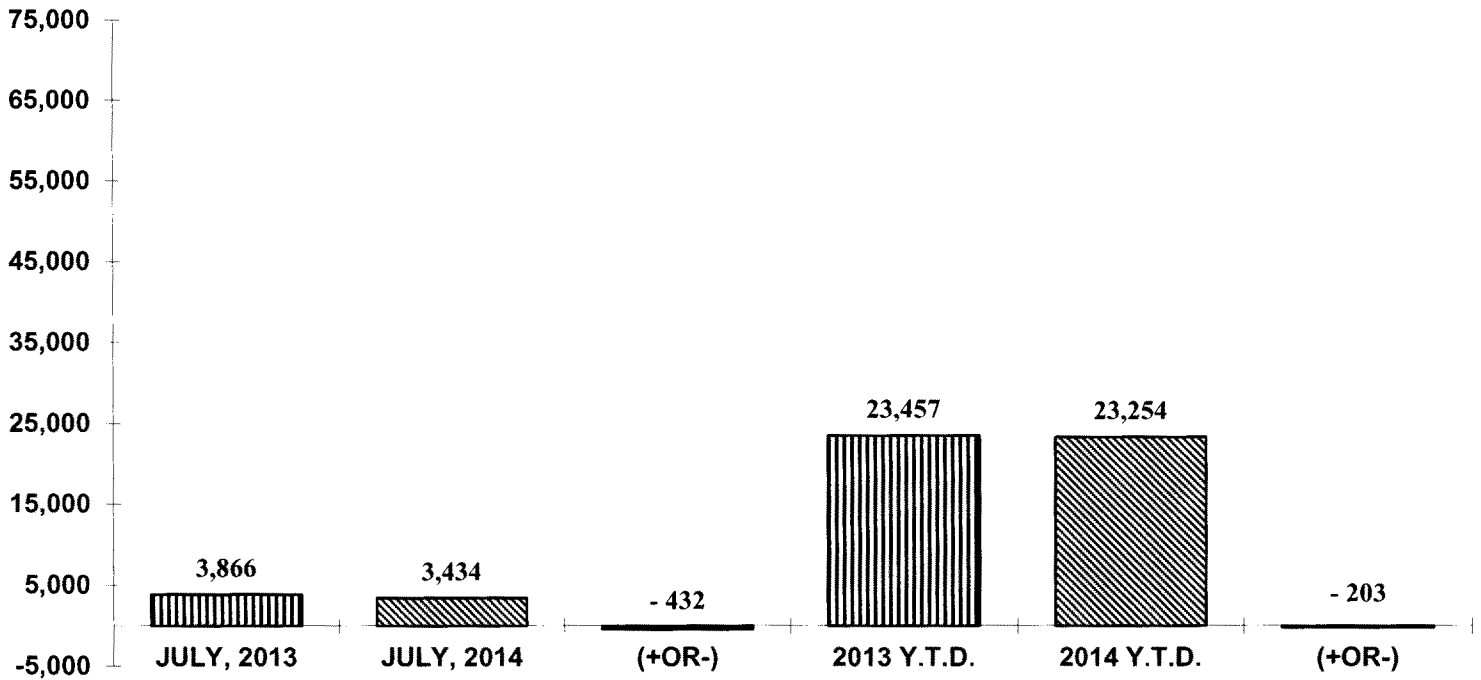
**MONTHLY REPORT  
FOR**

**JULY, 2014**

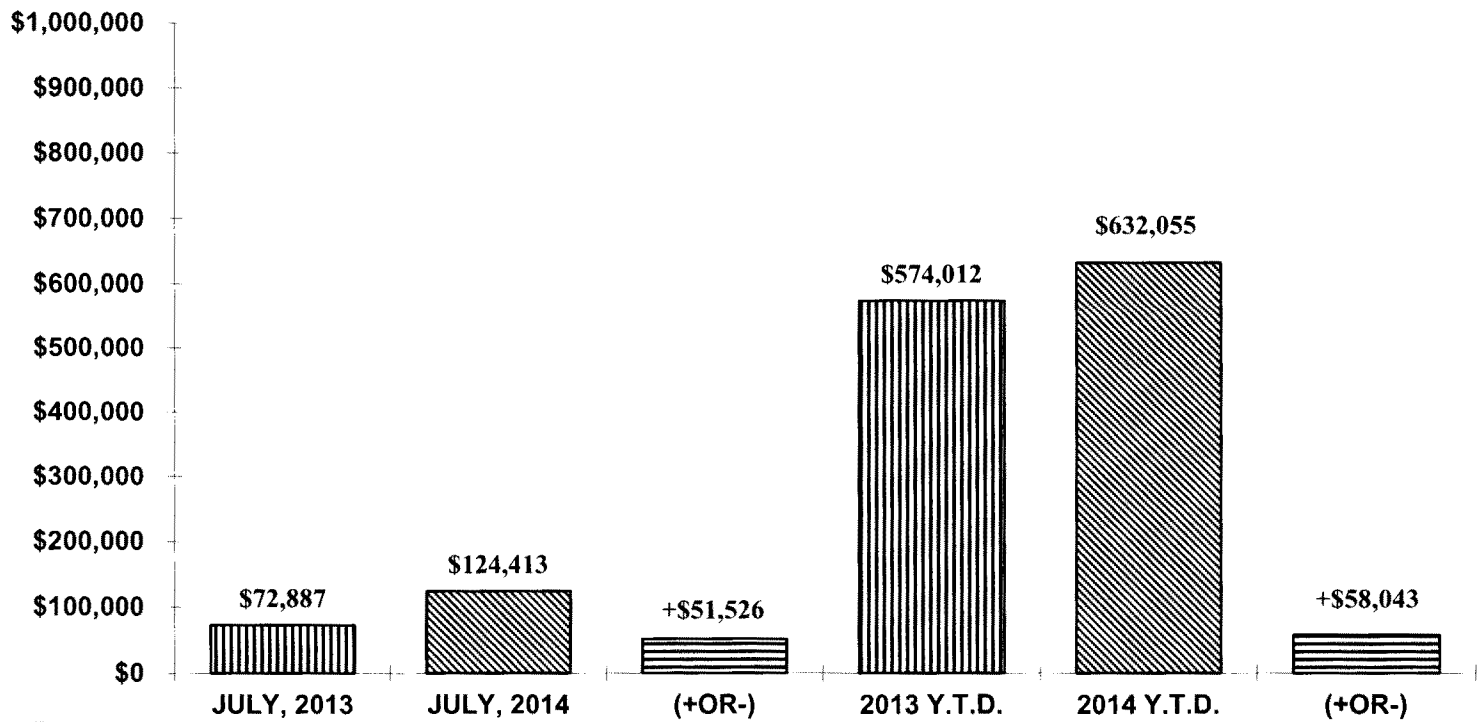
## DEPARTMENT OF PUBLIC SAFETY MONTHLY REPORT

	JULY, 2013	JULY, 2014	(+OR-)	2013 Y.T.D.	2014 Y.T.D.	(+OR-)
<b>FINES AND FORFEITURES</b>	\$72,887	\$124,413	+\$51,526	\$574,012	\$632,055	+\$58,043
<b>MUNICIPAL COURT CASES</b>	763	775	+ 12	5,718	7,255	+ 1,537
<b>JURY TRIALS REQUESTED</b>	35	25	--10	246	225	--21
<b>LARCENY OF MOTOR VEHICLES</b>	6	7	+ 1	15	28	+ 13
<b>TRAFFIC WARNINGS</b>	603	476	--127	3,836	3,368	--468
<b>NON-TRAFFIC ARRESTS</b>	125	123	--2	763	711	--52
<b>TRAFFIC ARRESTS</b>	704	732	+ 28	4,879	5,448	+ 569
<b>TOTAL ARRESTS</b>	829	855	+ 26	5,642	6,159	+ 517
<b>CALLS FOR SERVICE</b>	3,866	3,434	--432	23,457	23,254	--203
<b>OFFICER GENERATED CALLS</b>	2,612	1,904	--708	14,420	13,364	-1,056
<b>CITIZEN GENERATED CALLS</b>	1,254	1,530	+ 276	9,037	9,890	+853
<b>COMMUNITY POLICING</b>	495	406	--89	3,624	2,981	-643
<b>MAJOR CRIMES</b>	55	65	+ 10	320	359	+ 39
<b>TRAFFIC ACCIDENTS</b>	84	85	+ 1	558	573	+ 15
<b>FIRE CALLS</b>	37	27	--10	212	221	+ 9
<b>VICTIM'S ASSISTANCE MONEY</b>	\$3,776	\$6,424	+\$2,648	\$30,991	\$32,038	+\$1,047
<b>FIRST RESPONDERS</b>	78	76	--2	682	628	--54

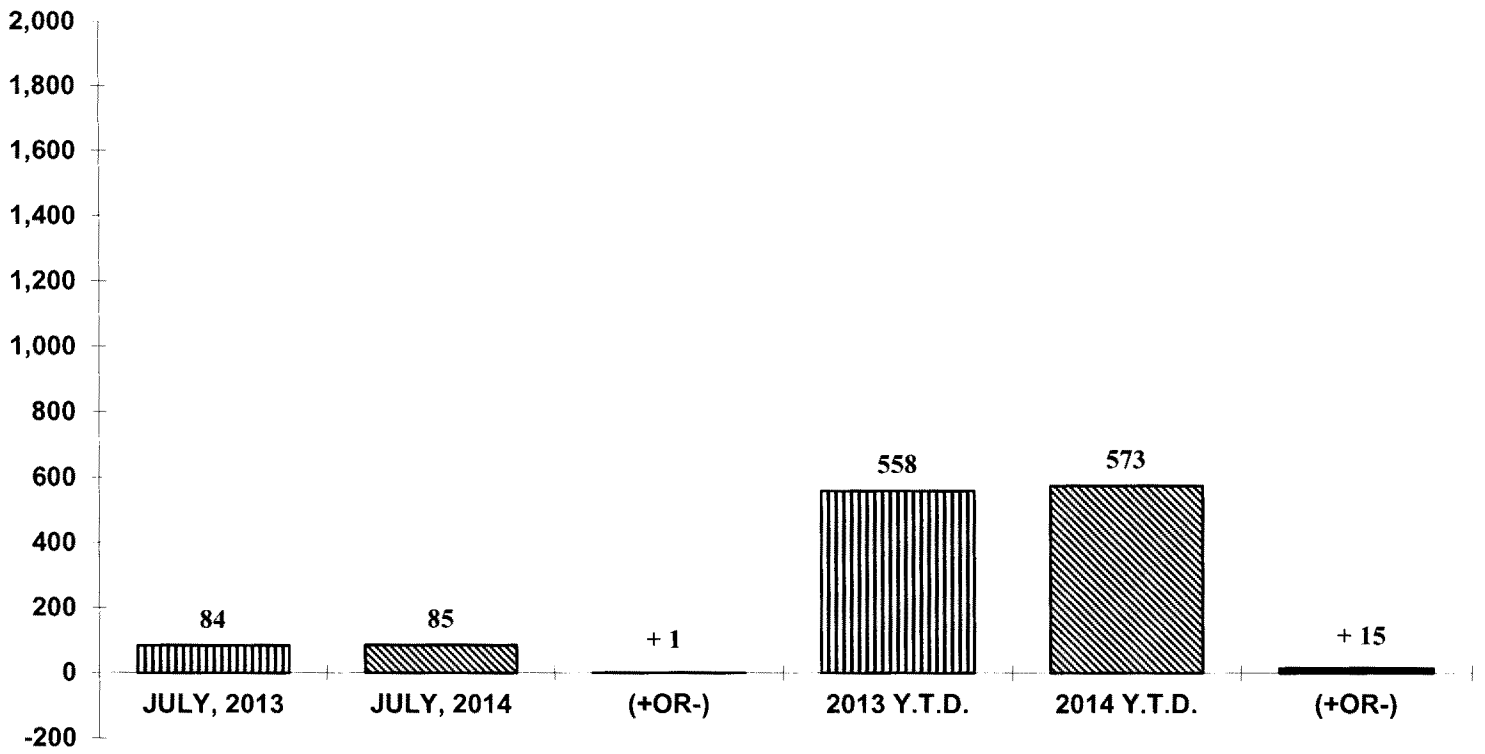
### CALLS FOR SERVICE



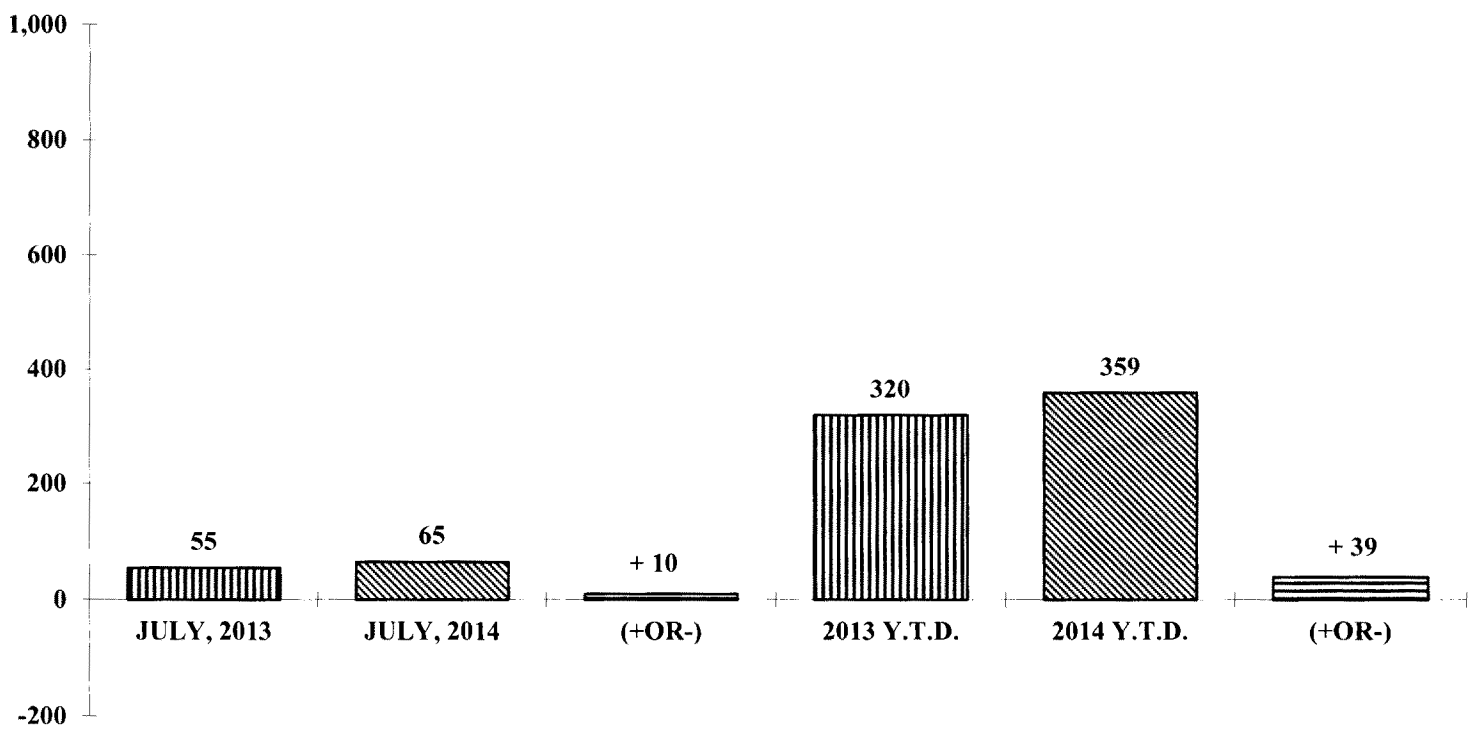
### FINES AND FORFEITURES



### TRAFFIC ACCIDENTS



### MAJOR CRIMES



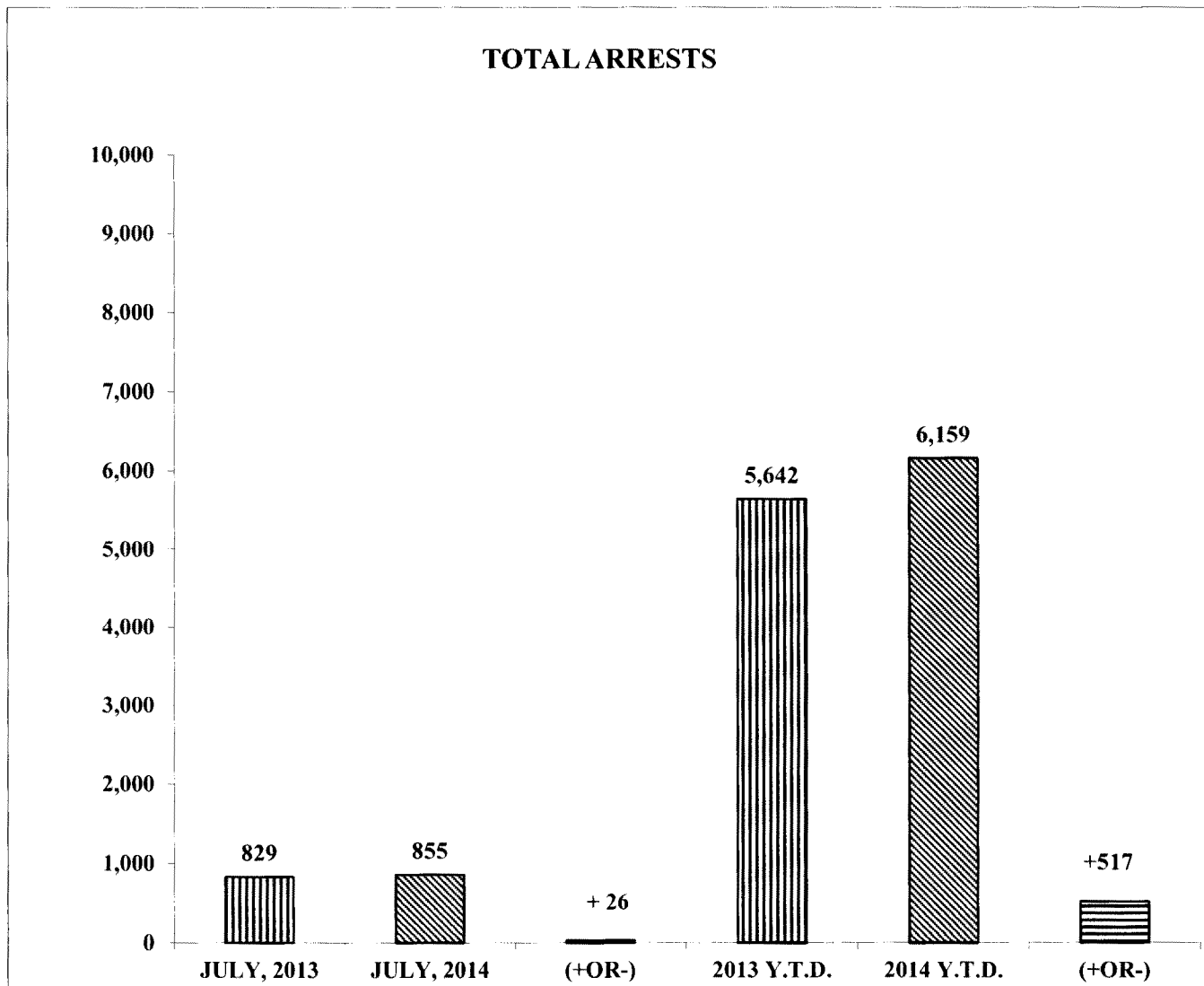


		MAJOR CRIMES												
		JAN	FEB	MAR	APR	MAY	JUN	JUL	AUG	SEP	OCT	NOV	DEC	Y.T.D
<b>MURDER/ATTEMPTED MURDER</b>	2010	0	0	0	0	0	0	0						0
	2011	0	0	0	0	0	0	0						0
	2012	0	0	0	0	0	0	0						0
	2013	0	0	0	0	0	0	0						0
	2014	0	0	0	1	0	0	0						1
<b>CRIMINAL SEXUAL CONDUCT</b>	2010	0	2	0	1	0	0	0						3
	2011	2	0	1	0	3	0	1						7
	2012	2	2	0	0	1	2	0						7
	2013	2	3	0	0	1	1	3						10
	2014	4	0	2	2	1	0	1						10
<b>ROBBERY</b>	2010	4	1	2	1	1	3	3						15
	2011	2	1	1	4	2	2	1						13
	2012	1	0	0	2	2	0	2						7
	2013	0	0	2	4	2	2	0						10
	2014	0	1	1	1	3	0	3						9
<b>AGGRAVATED ASSAULT</b>	2010	0	1	0	0	6	1	0						8
	2011	0	0	0	1	1	0	0						2
	2012	1	4	0	0	0	3	0						8
	2013	2	0	1	1	1	1	0						6
	2014	0	0	0	0	0	1	0						1
<b>BREAKING &amp; ENTERING</b>	2010	26	13	19	35	43	46	47						229
	2011	32	40	35	38	28	14	16						203
	2012	31	19	19	16	26	8	5						124
<b>AUTO</b>	2013	11	4	9	17	8	6	25						80
<b>AUTO</b>	2014	11	3	5	16	7	7	7						56
<b>LARCENY</b>	2010	26	16	17	24	29	23	19						154
	2011	22	13	19	29	14	23	36						156
	2012	23	15	17	14	24	29	18						140
	2013	30	17	17	26	27	26	16						159
	2014	21	19	27	40	25	18	30						180
<b>MOTOR VEHICLE THEFT</b>	2010	4	3	3	3	2	1	4						20
	2011	2	4	2	4	6	2	4						24
	2012	7	0	9	6	6	6	0						34
	2013	0	1	1	4	0	3	6						15
	2014	3	0	6	1	5	6	7						28
<b>ARSON</b>	2010	0	0	0	0	0	0	0						0
	2011	0	0	1	0	0	0	1						2
	2012	0	0	0	0	0	0	1						1
	2013	1	0	0	1	0	0	0						2
	2014	1	0	0	0	0	0	0						1
<b>BURGLARY</b>	2013	4	5	4	5	8	13	5						44
	2014	11	9	10	6	10	10	17						73
		FALSE ALARMS												
		JAN	FEB	MAR	APR	MAY	JUN	JUL	AUG	SEP	OCT	NOV	DEC	Y.T.D.
<b>POLICE</b>		148	200	133	154	163	162	155						1,115
<b>FIRE</b>		24	24	20	13	23	17	15						136
<b>TOTAL ALARMS</b>		172	224	153	167	186	179	170						1,251

### ARRESTS

	JAN	FEB	MAR	APR	MAY	JUN	JUL	AUG	SEPT	OCT	NOV	DEC	Y.T.D
MALE	589	524	507	528	530	442	550						3,670
FEMALE	400	333	394	375	392	290	305						2,489
WHITE	595	521	517	564	537	409	487						3,630
HISPANIC	22	25	39	32	44	31	40						233
BLACK	372	311	345	307	341	292	328						2,296
OVER 17	987	844	897	900	906	722	845						6,101
UNDER 17	2	13	4	3	16	10	10						58

### TOTAL ARRESTS



## ANIMAL CONTROL

	JAN	FEB	MAR	APR	MAY	JUN	JUL	AUG	SEPT	OCT	NOV	DEC	Y.T.D
CALLS FOR SERVICE	61	52	48	67	46	62	74						410
WARNING TICKETS	3	0	4	0	0	4	1						12
ANIMALS TURNED IN	24	22	22	24	9	46	24						171
ANIMALS CLAIMED	9	2	8	8	1	4	5						37
COURT CASES	3	5	0	0	0	0	1						9
CONVICTIONS	3	3	0	0	0	0	1						7
HEALTH CASES	3	1	1	1	1	2	2						11
VETERINARIAN COST	\$525		\$204		\$99	\$625	\$960						\$2,413
PICKUP FINES	\$370	\$250	\$225	\$296	\$145	\$110	\$405						\$1,801
COURT FINES	\$580	\$634	\$0	\$0	\$0	\$0	\$159						\$1,373

**NORTH AUGUSTA  
PARKS/RECREATION &  
LEISURE SERVICES**

**RICK MEYER, DIRECTOR**

**MONTHLY REPORT  
FOR**

**JULY, 2014**

# SPORTS ACTIVITY REPORT

Participation							Revenues		
Sport	Number of Teams	Participants	Prior Year	In City	Out City	Coaches	Current Month	YTD	Prior YTD
Basketball	73	680	549	478	202	146	\$0	\$8,873	\$16,668
Baseball	56	646	710	399	247	168	\$8,535	\$62,969	\$67,100
Softball -Adult	13	195	112			13	\$1,800	\$31,914	\$28,933
Softball -Youth	26	259	241	172	87	78			
Spring Soccer	45	511	526	388	123	90	\$0	\$28,570	\$30,568
Fall Soccer									
Classic Soccer									
Cheerleading									
Football							\$1,300	\$8,160	\$7,200
Volleyball							\$0	\$550	\$1,000

# MISCELLANEOUS RENTALS

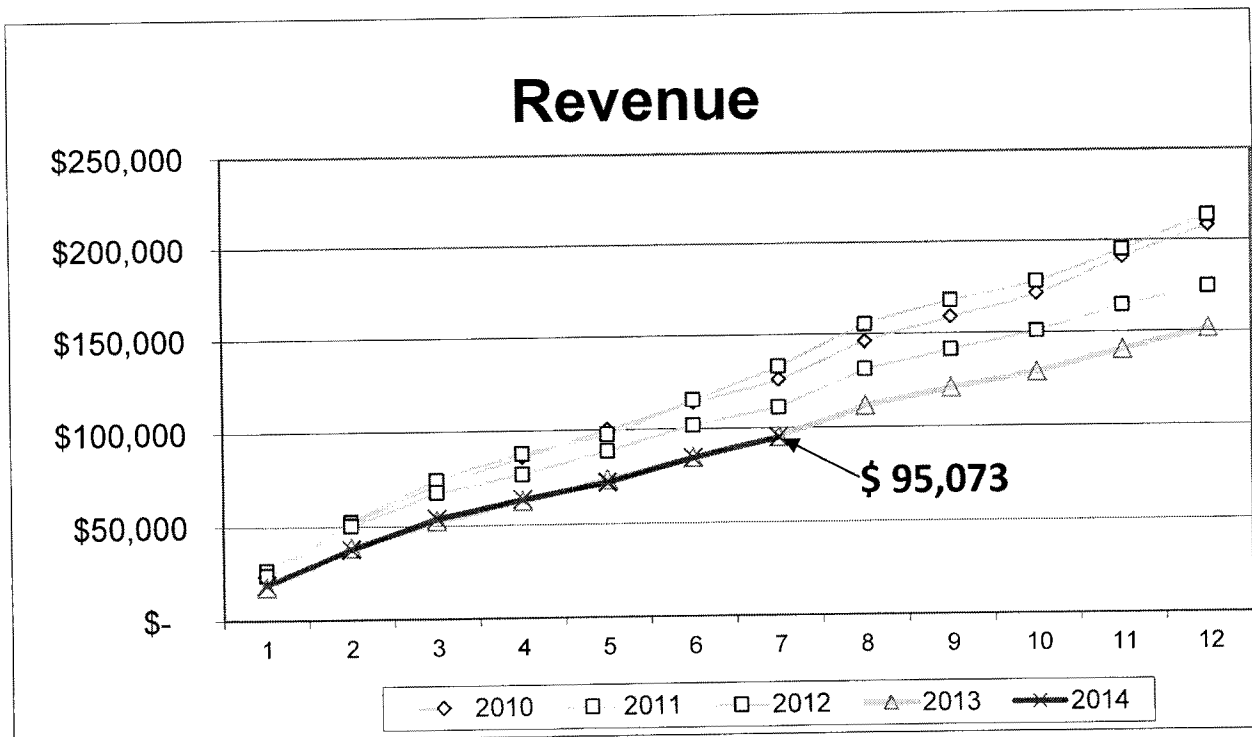
Rentals			Revenues			
Facility	Month	YTD	Month	Mo. Prior Year	YTD	Prior YTD
Pavilion	4	26	\$925	\$375	\$4,585	\$4,715

## Riverview Park Activities Center Revenue / Participation

	Revenue for Current Month	% 2014 Budget Recouped in Month	% 2014 Budget Recouped YTD	2014	2013	2012	2011	2010
Jan.	\$ 19,023	10.15%	10.15%	\$19,023	\$17,882	\$24,469	\$ 26,799	\$ 23,960
Feb.	\$ 18,824	10.04%	20.63%	\$37,847	\$38,674	\$50,416	\$ 52,355	\$ 51,168
Mar.	\$ 15,695	8.37%	28.56%	\$53,542	\$52,447	\$67,758	\$ 74,193	\$ 71,650
Apr.	\$ 9,843	5.25%	33.81%	\$63,385	\$62,753	\$76,967	\$ 87,901	\$ 85,980
May	\$ 8,700	4.64%	38.45%	\$72,085	\$73,633	\$88,999	\$ 97,797	\$ 100,179
June	\$ 12,555	6.70%	45.15%	\$84,640	\$84,857	\$102,108	\$ 115,662	\$ 114,188
July	\$ 10,433	5.62%	50.77%	\$95,073	\$95,582	\$111,170	\$ 133,125	\$ 126,051
Aug.					\$111,416	\$131,211	\$ 155,472	\$ 146,189
Sept.					\$120,856	\$141,479	\$ 168,193	\$ 159,087
Oct.					\$129,027	\$151,160	\$ 178,216	\$ 171,544
Nov.					\$140,808	\$164,979	\$ 195,313	\$ 190,994
Dec.					\$151,982	\$174,915	\$ 213,808	\$ 207,966
Total	\$ 95,073	50.77%	50.77%	\$ 95,073	\$151,982	\$174,915	\$213,808	\$207,966

	Current Month	YTD	Prior YTD	July Revenue	YTD	Prior YTD
Attendance	5,516	45,247	47,495			
Racquetball						
Jazzercise	46	299	277	\$252	\$1,783	\$1,725
Gymnastics		17	15		\$188	\$136
Tennis				\$756	\$3,021	\$4,742
Adventure	31	170	126	\$1,255	\$12,865	\$10,505

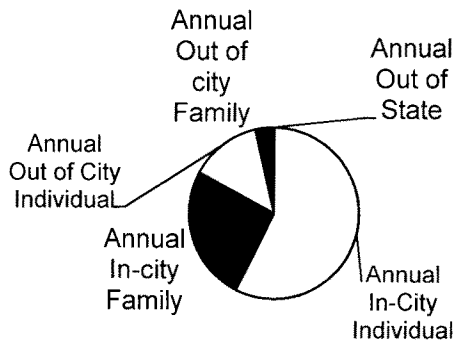
Salt Hours	240	1,680	1,680
------------	-----	-------	-------



## Activities Center Membership Breakdown

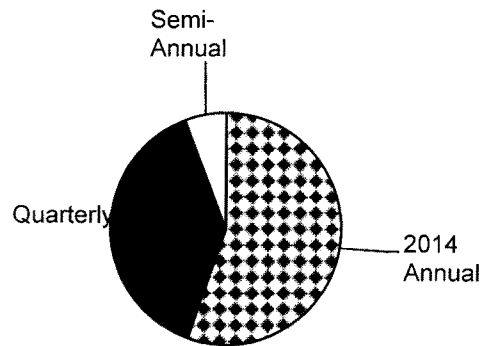
	Annual In-City Individual	Annual In-city Family	Annual Out of City Individual	Annual Out of city Family	Annual Out of State	Total Current for the Month	2014 Annual	Quarterly	Semi-Annual
Jan.	165	60	51	19	0	468	295	140	33
Feb.	102	65	23	10	0	346	200	126	20
Mar.	101	44	22	5	3	468	175	256	37
Apr.	55	48	21	0	0	274	124	140	10
May	75	21	15	0	0	208	111	83	14
Jun.	103	49	10	6	0	362	168	169	25
Jul.	88	20	21	0	0	243	372	101	13
Aug.									
Sept.									
Oct.									
Nov.									
Dec.									
<b>Totals</b>	<b>689</b>	<b>307</b>	<b>163</b>	<b>40</b>	<b>3</b>	<b>2369</b>	<b>1445</b>	<b>1015</b>	<b>152</b>

Membership Type Chart



- Annual In-City Individual
- Annual In-city Family
- Annual Out of City Individual
- Annual Out of city Family
- Annual Out of State

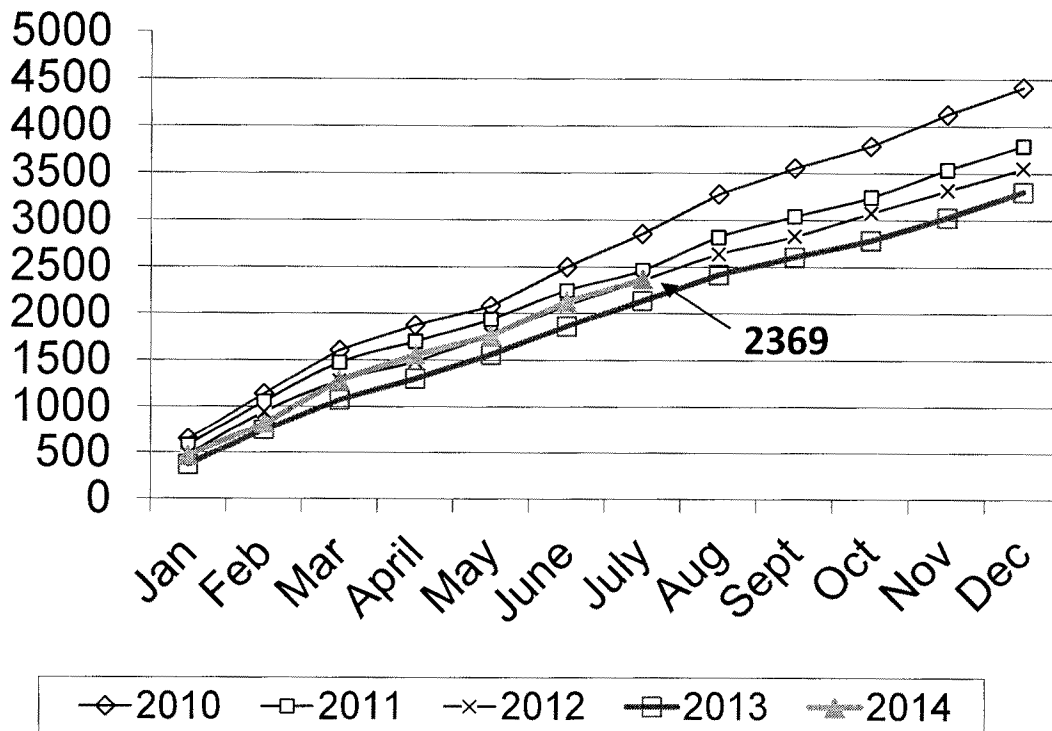
Membership Term Chart



- ▣ 2014 Annual
- Quarterly
- Semi-Annual

	Monthly Membership					Annual Membership Totals				
	2014	2013	2012	2011	2010	2014	2013	2012	2011	2010
Jan	468	368	476	582	648	468	368	476	582	648
Feb	346	381	466	472	490	814	749	942	1054	1138
Mar	468	325	335	419	467	1282	1074	1277	1473	1605
April	274	227	210	227	269	1556	1301	1487	1700	1874
May	208	260	287	238	203	1764	1561	1774	1938	2077
June	362	302	310	310	421	2126	1863	2084	2248	2498
July	243	273	274	217	354	2369	2136	2358	2465	2852
Aug		282	277	354	422		2418	2635	2819	3274
Sept		187	191	220	277		2605	2826	3039	3551
Oct		178	249	206	236		2783	3075	3245	3787
Nov		269	239	292	336		3027	3314	3537	4123
Dec		251	234	253	287		3303	3548	3790	4410
	2369	3303	3548	3790	4410					

## Annual Membership Chart





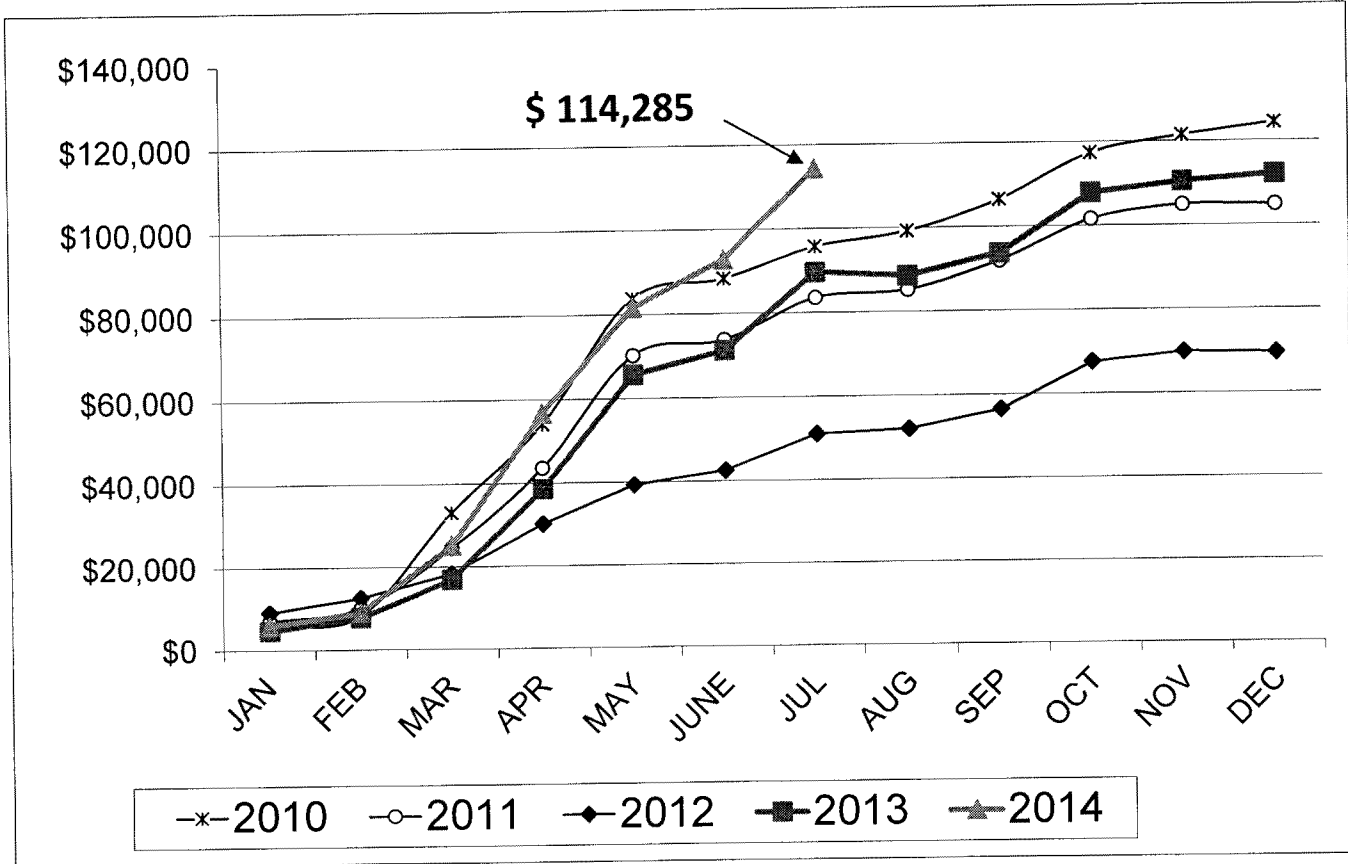
# Concession Revenue

## Monthly

	JAN	FEB	MAR	APR	MAY	JUNE	JUL	AUG	SEP	OCT	NOV	DEC
2010	\$5,699	\$2,672	\$24,575	\$21,150	\$29,662	\$4,544	\$7,401	\$3,511	\$7,229	\$10,865	\$4,128	\$2,946
2011	\$7,149	\$3,043	\$14,277	\$19,161	\$26,611	\$3,523	\$9,758	\$1,719	\$6,724	\$9,581	\$3,290	\$23
2012	\$9,169	\$3,437	\$5,692	\$11,809	\$9,164	\$3,254	\$8,521	\$1,004	\$4,429	\$11,052	\$2,241	-\$206
2013	\$4,688	\$3,129	\$9,082	\$21,706	\$27,036	\$5,584	\$18,406	-\$1,067	\$5,151	\$14,098	\$2,574	\$1,718
2014	\$5,950	\$3,129	\$15,944	\$31,645	\$24,952	\$11,271	\$21,393					

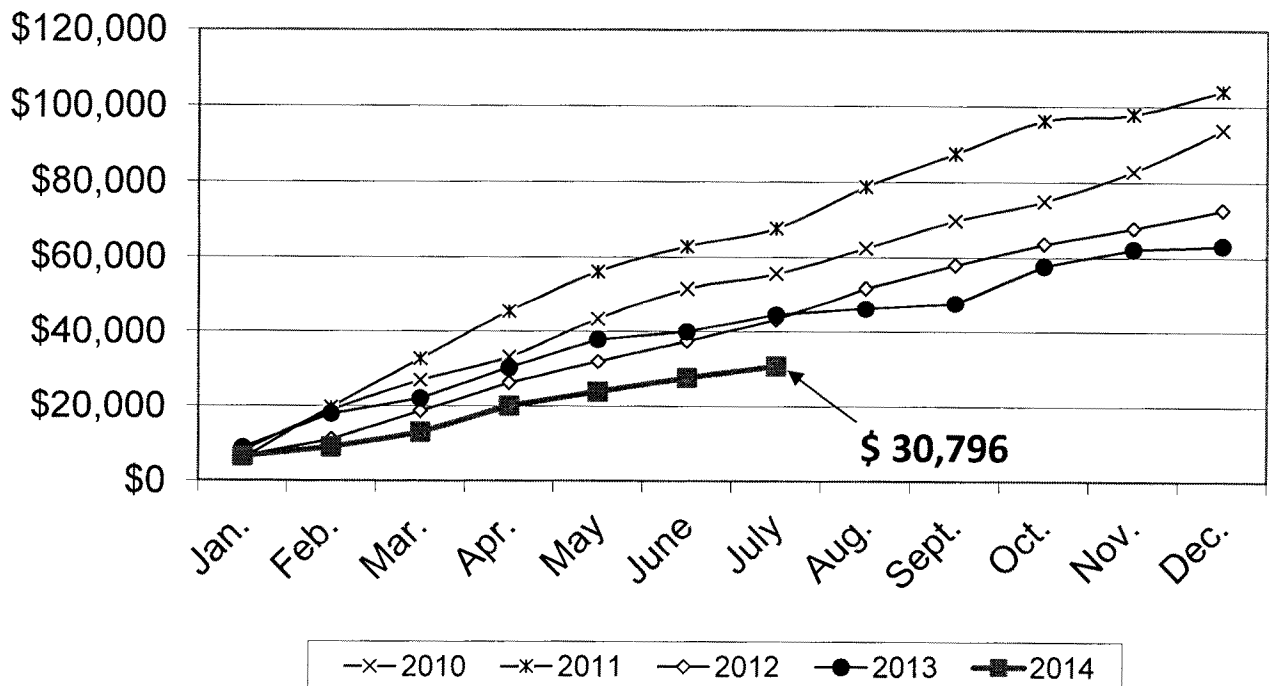
## Year-to-Date

2010	\$5,699	\$8,371	\$32,946	\$54,096	\$83,758	\$88,302	\$95,703	\$99,214	\$106,443	\$117,308	\$121,436	\$124,382
2011	\$7,149	\$10,192	\$24,469	\$43,630	\$70,241	\$73,764	\$83,522	\$85,241	\$91,965	\$101,546	\$104,836	\$104,859
2012	\$9,169	\$12,606	\$18,297	\$30,106	\$39,270	\$42,524	\$51,045	\$52,049	\$56,478	\$67,530	\$69,771	\$69,565
2013	\$4,688	\$7,817	\$16,899	\$38,605	\$65,641	\$71,225	\$89,631	\$88,564	\$93,715	\$107,813	\$110,387	\$112,106
2014	\$5,950	\$9,079	\$25,024	\$56,669	\$81,621	\$92,892	\$114,285					



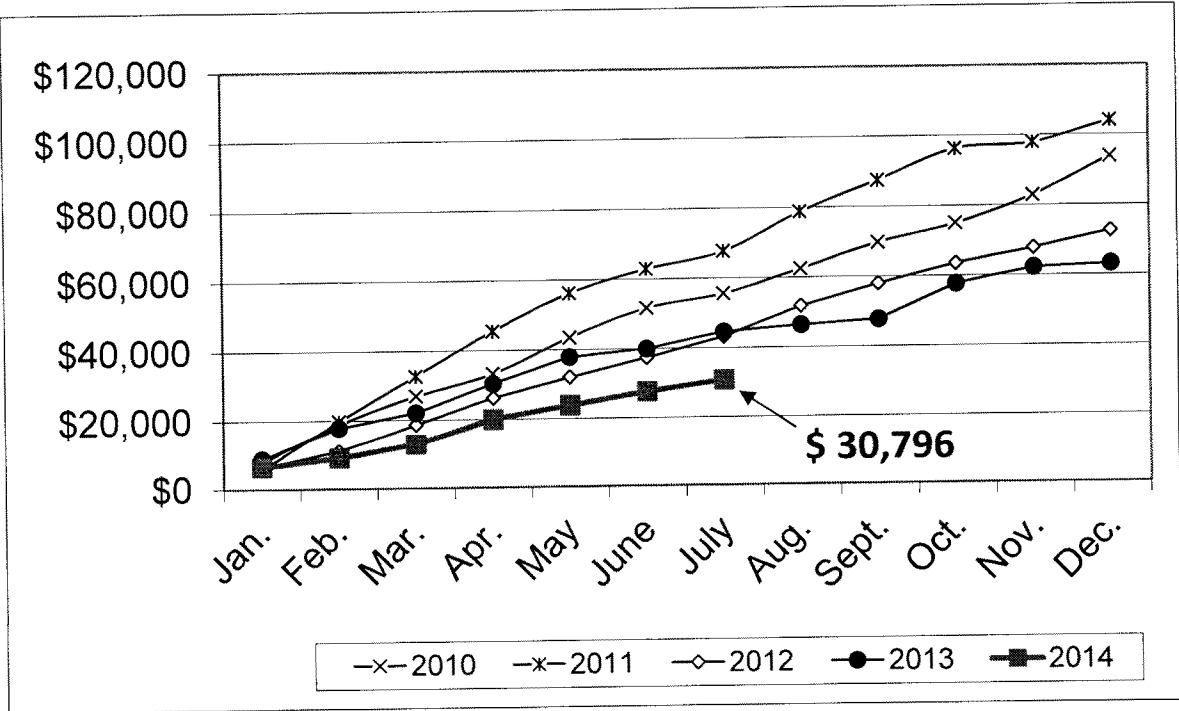
# COMMUNITY CENTER

RENTALS			REVENUES						
	Month	YTD	Month	Mth Prior Year	YTD	Prior YTD	Group Organization	Discount Rev. Received	Actual Value
Banquet	2	8	\$1,500	\$500	\$5,900	\$6,000			
Civic Group		37	\$0	\$0	\$725	\$1,205	Pilot,Lions,Exchange, Opt	\$120	\$1,265
Parties	6	26	\$150	\$1,000	\$7,025	\$9,915			
Community Meetings	9	85	\$150	\$400	\$3,575	\$4,590	DAV	\$25	\$175
							Seniors		\$400
							Arts Guild		\$75
							Chamber		\$500
Classes			\$0	\$0	\$0	\$0			
Industry Meetings	5	20	\$1,300	\$0	\$2,650	\$3,520			
Weddings	1	7	\$0	\$0	\$7,500	\$12,150			
Reunion			\$100	\$0	\$2,200	\$0			
Linen (#times used)			\$0	\$254	\$1,120	\$2,597			
Public Hearing			\$0	\$0	\$0	\$0			
Equipment Rental			\$0	\$0	\$60	\$0			
Miscellaneous			\$0	\$0	\$41	\$35			
<b>TOTAL</b>	<b>23</b>	<b>183</b>	<b>\$3,200</b>	<b>\$2,154</b>	<b>\$30,796</b>	<b>\$40,012</b>			



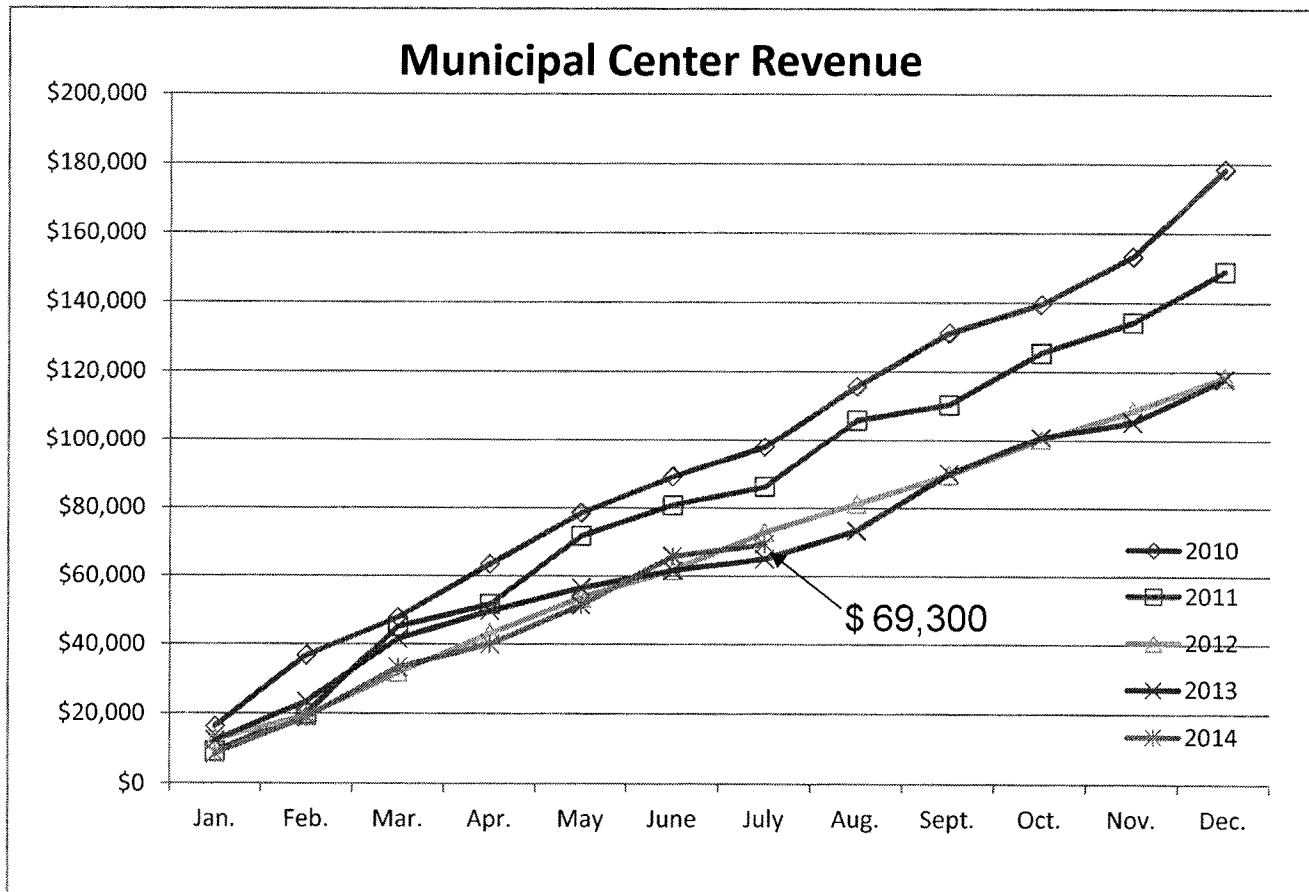
## Community Center Revenue

	Revenue for Current Month	% '14 Budget Recouped in Month	% '14 Budget Recouped YTD	2014	2013	2012	2011	2010
Jan.	\$ 6,481	9.17%	9.17%	\$6,481	\$8,828	\$6,460	\$5,805	\$7,948
Feb.	\$ 2,575	3.64%	12.82%	\$9,056	\$ 17,879	\$ 11,078	\$ 19,703	\$ 18,790
Mar.	\$ 3,900	5.52%	18.34%	\$12,956	\$ 22,087	\$ 18,638	\$ 32,701	\$ 26,880
Apr.	\$ 7,151	10.12%	28.46%	\$20,107	\$ 30,347	\$ 26,202	\$ 45,468	\$ 33,210
May	\$ 3,754	5.31%	33.77%	\$23,861	\$ 37,858	\$ 31,967	\$ 56,148	\$ 43,427
June	\$ 3,735	5.29%	39.06%	\$27,596	\$ 40,012	\$ 37,407	\$ 62,886	\$ 51,620
July	\$ 3,200	4.53%	43.59%	\$30,796	\$ 44,619	\$ 43,232	\$ 67,693	\$ 55,600
Aug.		0.00%			\$ 46,319	\$ 51,774	\$ 78,712	\$ 62,446
Sept.		0.00%			\$ 47,749	\$ 58,005	\$ 87,487	\$ 69,710
Oct.		0.00%			\$ 57,784	\$ 63,586	\$ 96,214	\$ 74,919
Nov.		0.00%			\$ 62,254	\$ 67,788	\$ 97,904	\$ 82,860
Dec.		0.00%			\$ 63,174	\$ 72,585	\$104,006	\$ 93,781
Total	\$ 30,796	43.59%	43.59%	\$30,796	\$63,174	\$72,585	\$104,006	\$93,781



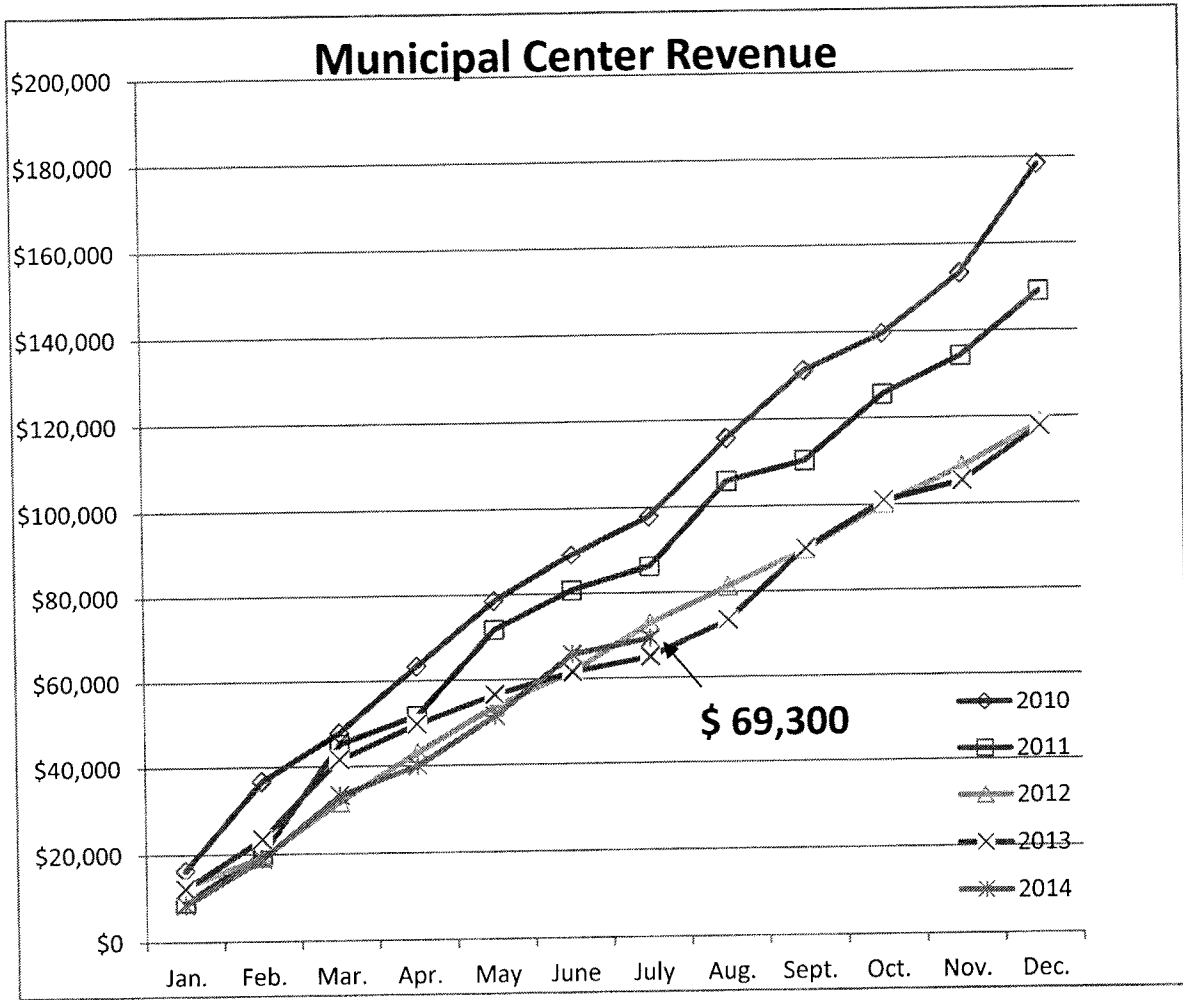
# MUNICIPAL CENTER

RENTALS			REVENUES						
	Month	YTD	Month	Mth Prior Year	YTD	Prior YTD	Group Organization	Discount Rev. Received	Actual Value
Banquet		2	\$0	\$0	\$3,100	\$4,900			
Civic Group			\$0	\$0	\$0	\$0			
Parties		3	\$0	\$0	\$9,900	\$10,750			
Community Meetings		5	\$0	\$0	\$700	\$0			
City Meetings		34	\$0	\$0	\$0	\$0		\$0	\$0
Classes			\$0	\$0	\$0	\$0			
Industry Meetings		13	\$1,650	\$1,200	\$9,080	\$13,500			
NA AHC		19	\$0	\$0	\$100	\$0		\$0	\$0
Weddings		12	\$0	\$2,250	\$37,500	\$23,100			
Reunion			\$0	\$0	\$0	\$0			
Linen (#times used)			\$1,583	\$1,407	\$6,507	\$6,461			
Public Hearing			\$0	\$0	\$0	\$0			
Equipment Rental			\$300	\$200	\$1,300	\$1,871			
Miscellaneous			\$0	\$0	\$1,113	\$985			
<b>TOTAL</b>	<b>0</b>	<b>88</b>	<b>\$3,533</b>	<b>\$5,057</b>	<b>\$69,300</b>	<b>\$61,567</b>			



## Municipal Center Revenue

	Revenue for Current Month	% '14 Budget Recouped in Month	% '14 Budget Recouped YTD	2014	2013	2012	2011	2010
Jan.	\$8,491	8.26%	8.26%	\$8,491	\$12,150	\$12,630	\$9,113	\$16,250
Feb.	\$10,379	10.10%	18.36%	\$18,870	\$23,378	\$19,280	\$19,862	\$36,698
Mar.	\$14,373	13.98%	32.34%	\$33,243	\$41,613	\$31,813	\$45,126	\$47,808
Apr.	\$6,795	6.61%	38.95%	\$40,038	\$49,713	\$43,129	\$51,689	\$63,406
May	\$11,405	11.09%	50.04%	\$51,443	\$56,510	\$53,656	\$71,743	\$78,494
June	\$14,324	13.93%	63.98%	\$65,767	\$61,567	\$61,669	\$80,787	\$89,199
July	\$3,533	3.44%	67.41%	\$69,300	\$64,985	\$72,801	\$86,217	\$97,918
Aug.		0.00%			\$73,367	\$81,243	\$105,895	\$115,672
Sept.		0.00%			\$90,116	\$89,743	\$110,419	\$131,154
Oct.		0.00%			\$100,927	\$100,223	\$125,474	\$139,470
Nov.		0.00%			\$105,338	\$108,594	\$134,214	\$153,234
Dec.		0.00%			\$117,777	\$118,467	\$148,961	\$178,316
<b>Total</b>	<b>\$ 69,300</b>	<b>67.41%</b>	<b>67.41%</b>	<b>\$69,300</b>	<b>\$117,777</b>	<b>\$118,467</b>	<b>\$148,961</b>	<b>\$178,316</b>





**NORTH AUGUSTA  
DEPARTMENT OF  
ENGINEERING & PUBLIC WORKS**

***TOM ZEASER, P.E.  
DIRECTOR***

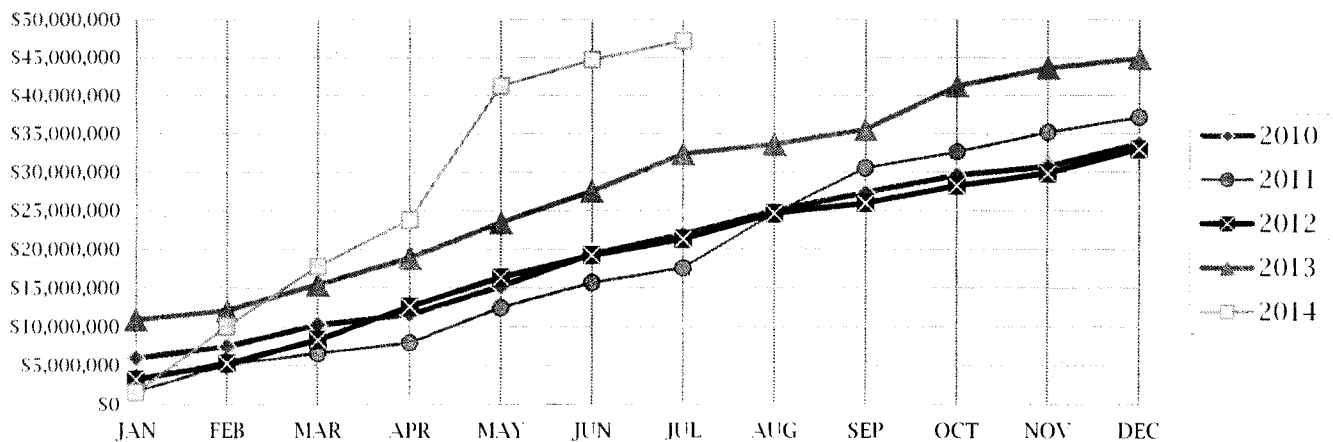
**MONTHLY REPORT  
FOR**

**July, 2014**

# BUILDING ACTIVITY

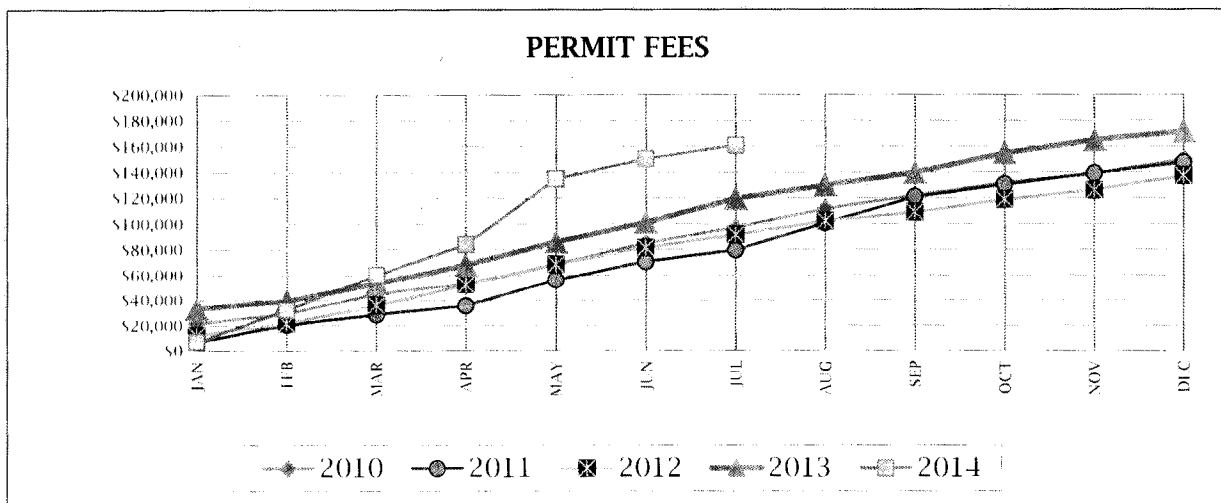
	NUMBER OF PERMITS			\$ VALUE OF CONSTRUCTION		
	July 2014	2014 YTD	2013 YTD	July 2014	2014 YTD	2013 YTD
<b>NEW RESIDENTIAL:</b>						
Single Family-Attached	0	11	23	\$ -	\$ 1,159,325	\$ 2,635,835
Single Family-Detached	5	49	54	\$ 1,204,118	\$ 13,521,087	\$ 15,841,712
Two Family	0	0	0	\$ -	\$ -	\$ -
Three & Four Family	0	0	0	\$ -	\$ -	\$ -
Five or More Family	0	0	0	\$ -	\$ -	\$ -
<b>Residential Total:</b>	<b>5</b>	<b>60</b>	<b>77</b>	<b>\$ 1,204,118</b>	<b>\$ 14,680,412</b>	<b>\$ 18,477,547</b>
<b>NEW COMMERCIAL:</b>	<b>1</b>	<b>6</b>	<b>5</b>	<b>\$ 16,000</b>	<b>\$ 12,733,754</b>	<b>\$ 7,983,175</b>
<b>ALTERATIONS/ADDITIONS:</b>						
Residential	45	277	265	\$409,834	\$2,081,239	\$2,361,215
Commercial	6	25	27	\$202,012	\$15,148,693	\$1,736,384
<b>Alt/Add Total:</b>	<b>51</b>	<b>302</b>	<b>292</b>	<b>\$611,846</b>	<b>\$17,229,932</b>	<b>\$4,097,599</b>
<b>MISCELLANEOUS:</b>						
Swimming Pools	5	12	9	\$155,400	\$372,320	\$492,400
Gradings	1	4	5	\$460,000	\$1,962,000	\$1,204,000
Signs	4	22	20	\$11,950	\$195,953	\$67,895
Demolitions	2	6	12	\$0	\$0	\$0
Stormwater Permits	3	14	7	\$0	\$0	\$0
<b>Miscellaneous Total:</b>	<b>15</b>	<b>58</b>	<b>53</b>	<b>\$627,350</b>	<b>\$2,530,273</b>	<b>\$1,764,295</b>
<b>Total all Construction:</b>	<b>72</b>	<b>426</b>	<b>427</b>	<b>\$2,459,314</b>	<b>\$47,174,371</b>	<b>\$32,322,616</b>

## Total Value of Construction



## PERMITS / FEES

	July 2013	July 2014	(+OR-)	Total 2013 YTD	Total 2014 YTD	(+OR-)
<b>PERMITS:</b>						
BUILDING	61	68	+ 7	416	428	+ 12
MECHANICAL	41	45	+ 4	234	247	+ 13
ELECTRICAL	29	33	+ 4	260	264	+ 4
PLUMBING	21	25	+ 4	203	166	- 37
GRADING	0	1	+ 1	5	4	- 1
STORMWATER	1	0	- 1	7	12	+ 5
<b>TOTAL</b>	<b>153</b>	<b>172</b>	<b>+ 19</b>	<b>1125</b>	<b>1121</b>	<b>- 4</b>
<b>PERMIT FEES:</b>						
BUILDING	\$15,281	\$6,904	- \$8,377	\$96,691	\$129,194	+ \$32,503
MECHANICAL	\$1,096	\$941	- \$155	\$6,277	\$8,680	+ \$2,403
ELECTRICAL	\$713	\$805	+ \$92	\$5,436	\$7,113	+ \$1,677
PLUMBING	\$800	\$648	- \$152	\$6,201	\$6,119	- \$82
GRADING	\$0	\$1,232	+ \$1,232	\$3,012	\$4,889	+ \$1,877
STORMWATER	\$390	\$0	- \$390	\$1,830	\$4,800	+ \$2,970
<b>TOTAL</b>	<b>\$18,280</b>	<b>\$10,530</b>	<b>- \$7,750</b>	<b>\$119,447</b>	<b>\$160,795</b>	<b>+ \$41,348</b>



## CONTRACTOR BUSINESS LICENSES

	July 2013	July 2014	(+OR-)	Total 2013 YTD	Total 2014 YTD	(+OR-)
<b>LICENSES ISSUED</b>	20	23	+ 3	605	712	+ 107
<b>LICENSE FEES</b>	\$3,865	\$2,756	- 1,109	\$96,926	\$155,822	+ 58,896

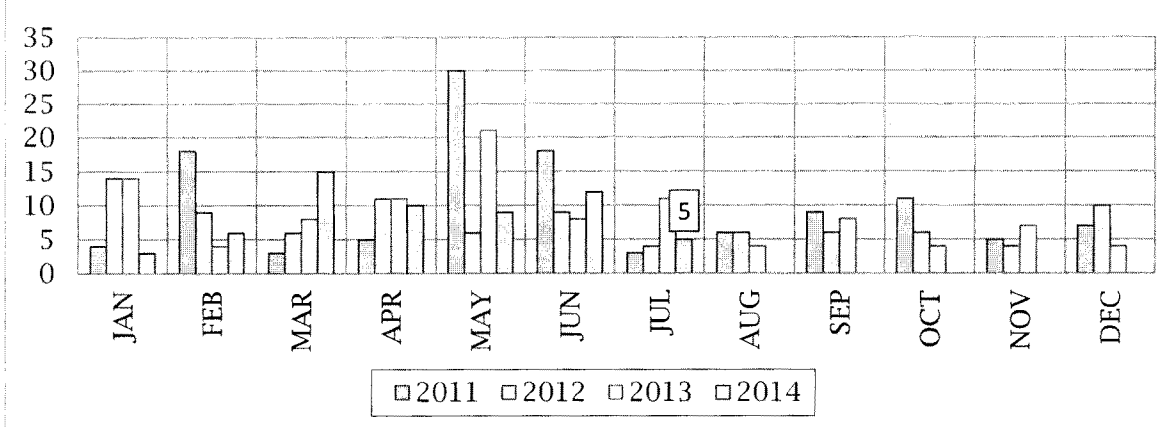


# INSPECTION ACTIVITY REPORT

	INSPECTIONS	RE-INSPECTIONS	TOTALS
<b>CONSTRUCTION</b>			
Building	80	23	103
Plumbing	52	23	75
Mechanical/Gas	42	18	60
Electrical	104	37	141
<b>Construction Total:</b>	<b>278</b>	<b>101</b>	<b>379</b>
<b>GENERAL INSPECTIONS</b>			
Certificate of Occupancy	6		
Condemnations	0		
<b>General Inspections Total:</b>	<b>6</b>	<b>0</b>	<b>6</b>
<b>TOTAL INSPECTIONS</b>	<b>284</b>	<b>101</b>	<b>385</b>
<b>PLAN REVIEW</b>			
Commercial	5		
Residential	14		
<b>Plan Review Total</b>	<b>19</b>		<b>19</b>
<b>MISCELLANEOUS:</b>			
Meetings	25		
No Permits	1		
Incoming Phone Inquiries	440		
<b>Miscellaneous Total</b>	<b>466</b>		<b>466</b>

<i>Total inspections performed this month:</i>	<b>385</b>
<i>Total inspections performed Year to Date:</i>	<b>2695</b>
<i>Average number of inspections per day:</i>	<b>17.50</b>
<i>Average of inspections per inspector per day:</i>	<b>8.22</b>
<b>Meetings Year to Date: 132</b>	
<b>Plan Reviews Year to Date: 109</b>	

## RESIDENTIAL HOUSING STARTS



## STREETS AND DRAINS/STORMWATER

	Year	JAN	FEB	MAR	APR	MAY	JUNE	JULY	AUG	SEPT	OCT	NOV	DEC	YTD Total
Street Name Signs	2014	8	15	8	2	4	1	2						40
	2013	18	23	18	18	15	54	27	19	9	12	6	9	228
Street Sign Repairs	2014	7	2	4	3	3	3	5						27
	2013	3	2	2	5	2	3	6	2	3	7	3	2	40
Traffic Signs	2014	2	2	5	2	2	3	2						18
	2013	1	14	2	6	2	2	11	3	5	4	3	4	57
Traffic Sign Repairs	2014	4	3	1	2	4	7	2						23
	2013	4	3	5	6	6	1	4	5	6	4	3	2	49
Banners Installed	2014	1	2	2	2	2	0	2						11
	2013	2	1	2	2	1	0	0	2	2	3	2	1	18
Signal Lights	2014	2	2	5	2	1	2	1						15
	2013	1	0	1	0	1	3	7	1	2	1	2	1	20
Signal Light Repair	2014	4	7	5	4	4	5	2						31
	2013	7	5	11	8	11	14	15	7	4	7	4	3	96
Street Light Service	2014	1	4	3	2	1	3	7						21
	2012	4	1	3	9	11	7	4	11	7	9	11	4	81
Asphalt Repairs (tons)	2014	14.0	11.0	18.0	37.0	42.0	22.0	47.0						191.0
	2013	27.0	16.0	17.0	58.0	16.0	9.0	32.0	40.0	52.0	33.0	158.0	18.0	476.0
Asphalt Tack (gals)	2014	5.0	5.0	10.0	10.0	10.0	5.0	10.0						55.0
	2012	10.0	5.0	10.0	15.0	5.0	5.0	15.0	20.0	20.0	20.0	30.0	5.0	160.0
Concrete Repairs (cy)	2014	17.0	22.0	27.0	37.0	32.0	27.0	69.0						231.0
	2013	52.0	26.0	18.0	17.0	12.0	12.0	21.0	36.0	19.0	18.0	38.0	16.0	285.0
Storm Drains Cleaned	2014	22	18	20	21	22	18	16						137
	2013	29	29	25	19	38	53	28	24	17	22	19	22	325
Detention Ponds Cleaned	2014	1	0	2	2	3	7	6						21
	2013	1	1	0	0	1	2	0	2	8	19	3	0	37
Storm Pipe Placed LF	2014	240	360	70	0	0	12	280						962
	2013	100	70	20	100	0	0	0	0	0	0	100	360	750
Construction Site Inspections	2014	19	22	25	25	23	25	31						170
	2013	25	26	23	18	25	32	25	21	58	27	20	21	321